

Species of Trees and Shrubs

Below is a list of some of the trees and shrubs that are compatible and not compatible near or under power lines.

Look for trees at your local nurseries that are tagged with the TreeSmart logo. If you're not sure if the tree you're considering meets the TreeSmart criteria, ask your landscaping professional.

Recommended:

- Japanese maple
- Paperbark maple
- Cornelian cherry dogwood
- Smoke tree
- Ivory silk Japanese tree lilac
- Goldenrain tree
- Akebono cherry
- Mt. Fuji flowering cherry
- Sargent cherry
- Crimson cloud hawthorn
- Washington hawthorn
- Japanese snowbell
- Sourwood
- Allegheny serviceberry
- Carolina silverbell
- Trident maple
- Mt. St. Helens plum
- Glorybower
- Amur maackia

Avoid Planting:

- Bigleaf maple
- Box elder
- Silver maple
- Catalpa
- London plane, sycamore
- Cottonwoods, poplars
- Weeping willows
- Douglas-fir
- Western red-cedar
- Western hemlock
- Deodara cedar
- Spruces
- Pines

DOs and DON'Ts

DO consult with Jefferson PUD when planning projects of any kind.

DO call Jefferson PUD before planting, digging or constructing.

DO take the time to plan projects that conform to proper use of the rights-of-way.

DO review the provided list of compatible and non-compatible trees or shrubs that can be planted near or under power lines.

DON'T cut or trim a tree near a power line. Call Jefferson PUD!

DON'T plant, dig or construct in Jefferson PUD's rights-of-way without first contacting Jefferson PUD for approval.

DON'T store equipment, materials, flammable material, waste or anything that would cause a fire hazard or other safety issue or impede access by line crews to poles and lines.

Additional Information

If you have any other questions related to a right-of-way issue or would like to talk to a Right-of-Way Agent, please contact Jefferson PUD Engineering Dept. at 360-385-8363. A Right-of-Way Agent will be happy to help you.



310 Four Corners Road
Port Townsend, WA 98368
(360) 385-5800 • (800) 700-7152
www.jeffpud.org

April 2015

For more information, including Right-of-Way Agent contacts, call the Engineering Department at 360-385-8360, or call our vegetation manager at 360-385-8363. A Jefferson PUD Representative will return your call.

TREE CLEARING NEAR ELECTRICAL LINES: A GUIDE FOR PROPERTY OWNERS



This guide is designed to assist property owners when trees need to be removed or trimmed near or under electric lines owned by Jefferson PUD. This guide will also provide helpful tips on the types of trees to plant near electric lines, safe working distances around and near electric lines, and Jefferson PUD's tree maintenance program for its electric lines.



We need your help to keep the way clear for safe and reliable service. Keeping electrical transmission and distribution lines safe and reliable are critical priorities for Jefferson PUD. The key element in achieving those objectives is Jefferson PUD's ability to construct, operate and maintain its electrical system and rights-of-way—the area under and around the lines.

You can help Jefferson PUD keep these rights-of-way clear of trees, brush and structures that could affect the safety and reliability of the electrical system. Prior to planting, trimming or removing trees near Jefferson PUD's power lines, please call 360-385-8363 to talk to our right of way and vegetation manager.

Coordinating with Jefferson PUD early in your planning process can keep you safe and avoid wasting time and money.

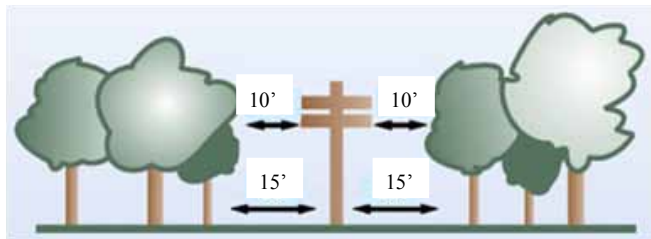
Danger Trees

Tree contact with power lines is the single leading cause of power outages on our system. That is why we do everything we can to strike a healthy balance between our appreciation for trees and our obligation to provide safe, reliable electric service. Through our regularly scheduled tree trimming program, we redirect tree growth away from power lines so we can limit any electric system damage that could be caused by extreme weather conditions. If a tree grows too fast or if its proximity to power lines is a threat to our electric system, our expert contractors trim the growth away from our equipment.

Jefferson PUD must identify and arrange to cut trees that, although outside the right-of-way, may threaten the electric lines because they could fall into the wires or poles. Trees that are unstable, diseased, dead or leaning toward the electric facilities don't need to touch power lines to be dangerous.

Electricity can "arc" or "flashover" from wires, through the air, to trees or equipment, where it can cause fires, injuries or even fatalities to anyone near the tree or equipment.

In some cases, we may need to trim intruding branches along the rights-of-way adjoining your property. In other instances, we may need to remove non-compatible trees to encourage establishment of lower-growing trees near power lines.



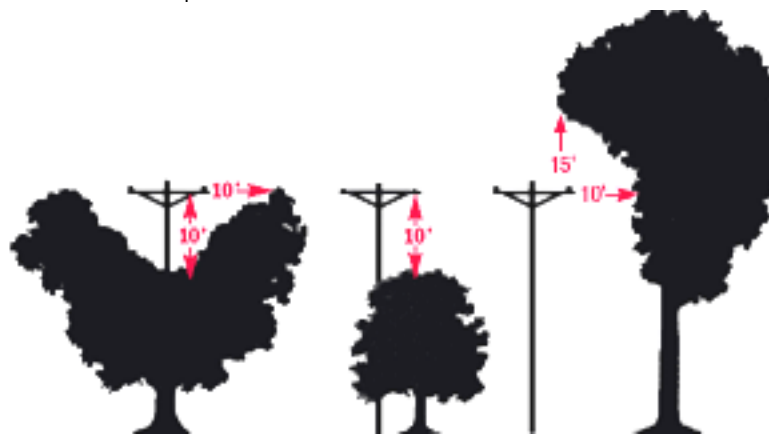
Right-of-way Clearing

Outages are always inconvenient. Some outages are out of our control - things like major storms, car accidents and vandalism.

One thing Jefferson PUD tries to control is trees near the wires otherwise known as right-of-way clearing. Jefferson PUD uses Asplundh Tree Service for its brushing and right-of-way clearing.

When clearing an existing right-of-way, the crews cut trees and branches that are within 10 feet of an overhead power line. Attempts are made to notify property owners when right-of-way clearing will be done on their property.

Below are some methods that crews use to trim trees near power lines:



Look Up When Planting Trees

If you plant trees or do any landscaping in your yard, here are some things to keep in mind.

- Trees and shrubs can be a problem for overhead and underground facilities. You need to consider both when deciding where to plant or how to landscape your yard.
- When deciding where to plant trees or shrubs, look up first. If there are overhead power lines in the area, you may want to reconsider where you are going to plant. You definitely don't ever want to plant anything directly under power lines.
- Even if it seems like you are planting that little sapling far enough away, how big will that tree get in 10-15 years, or when it's full grown?
- The mature tree must have enough space away from power lines and in an area large enough to accommodate the canopy and root system.
- If someone has a pad-mount transformer (a green electrical metal box that sits on the ground and is used for underground cable), the first thing they want to do when landscaping is to hide it with shrubs and plants. If there is a power outage, crews must have access to that transformer. Any landscaping close to that transformer will be damaged and may cause the outage to take longer to restore.
- Trees planted too close to underground cable can eventually damage the cable when tree roots grow into the cable. If a cable is nicked while digging, eventually it will fail in that spot, again causing a power outage.
- If you have any questions about where you should or should not do any planting, call Jefferson PUD at 360-385-8363, and ask to be directed to the Vegetation Management Department. We will be happy to help you.