

COMMUNICATION TRANSPORT SERVICES**residential only****RETAIL PON INTERNET**

Internet + WiFi

Internet + WiFi Low income Program Enrolled (LIPE)

	150/150 Mbps	1/1 Gbps	3/3 Gbps	5/5 Gbps	5/5 MTU NRC
MRC	\$65	\$75	\$150	\$350	\$150
MRC	\$45	\$55	n/a	n/a	

WHOLESALE PON CONNECTION

(requires internet access, network transport, or both)

Wholesale PON

Wholesale PON LIPE

residential only

	150/150 Mbps	1/1 Gbps	3/3 Gbps	5/5 Gbps
MRC	\$47	\$54	\$117	\$287
MRC	\$37	\$44	n/a	n/a

NETWORK TRANSPORT*Does not include internet.*

WHOLESALE NETWORK TRANSPORT

RETAIL NETWORK TRANSPORT

Core Port		End Point	
MRC	NRC	MRC	NRC
\$200	\$150	\$150	\$100
\$220	\$150	\$165	\$100

INTERNET ACCESSDEDICATED PRODUCT (delivered at 95th Percentile)

WHOLESALE DEDICATED INTERNET

RETAIL DEDICATED INTERNET

	MRC	NRC
Price/Mbps		
	\$0.45	\$100
	\$0.55	\$100

METERED PRODUCT (Billed at 95th Percentile)

WHOLESALE METERED INTERNET

RETAIL METERED INTERNET

	MRC	NRC
Price/Mbps		
	\$0.60	\$100
	\$0.65	\$100

OTHER BROADBAND PRODUCTS**RETAIL MESH WIFI ROUTER RENTAL**

TYPE	>1 Gig	1 Gig
MRC	\$20	\$10
RETAIL WIFI CONTROL APP	SmartBiz	Home
MRC	\$40	10

Dedicated IP (each) (limited availability)

MRC	\$10
-----	------

Battery Backup (limited availability)

MRC	\$5
-----	-----

RETAIL VOICE OVER INTERNET PROTOCOL (VOIP) TELEPHONE SERVICE

Local, long distance, and limited international telephone line with numerous features.

RETAIL MRC

Basic Package

Premium Package

PUD Verified Low-Income Discount

Full Business Solution

	\$15
	\$25
	-\$5
	Request Quote

LEGACY NETWORK CHARGES *To be discontinued*
ALL CURRENT BILLED RATES APPLY THROUGH 12/31/24
NO NEW CONNECTIONS AVAILABLE

COLOCATION

charged per item per facility	MRC
Full Rack	\$400
Half Rack	\$250
One Quarter Rack	\$150
DC Power	\$18

Additional 20-amp AC circuits By request. Cost to be determined if available.

FIBER LINE EXTENSION CHARGES

See Broadband tab of JPUD website for published maps of project areas.

AREA	W/n Take Rate	Past Take Rate	Past Footage Limit
UNFUNDED SERVICE ZONE	All construction charges billed to customer.	All construction charges billed to customer.	All construction charges billed to customer.
GRANT FUNDED PROJECT AREAS	No charge to eligible customers for fiber construction and equipment installation. Limited to ~1000 ft.	\$750 to eligible customers for fiber construction and equipment installation. Limited to ~1000 ft.	A portion of construction charges beyond 1100 ft billed to customer.
DESIGNATED AREAS ADJACENT TO GRANT PROJECTS	\$750 to eligible customers for fiber construction and equipment installation. Limited to ~500 ft.	n/a	A portion of construction charges beyond 550 ft billed to customer.
BUSINESS DISTRICT LOAN PROJECT AREAS (Requires UBI#)	\$1,200 to eligible customers for fiber construction and equipment installation. Limited to ~500 ft.	n/a	A portion of construction charges beyond 550 ft billed to customer.

LABOR CHARGES

Applies to any requested work not included in installation, or for work on non PUD facilities

DURING OFFICE HOURS	\$150 per hour	30 minutes minimum
<i>8am to 4:30pm, Monday through Friday, excluding holidays.</i>		
AFTER HOURS	\$200 per hour	1hr. minimum
<i>4:30pm to 8am, Monday through Friday and anytime weekends and holidays.</i>		

JPUD BROADBAND NETWORK SCHEDULE OF RATES AND CHARGES

Note 1. RETAIL PON CONNECTION: These rates are available for a shared best-effort connection on the PON network. These rates are only available for direct service to retail customers. There are two sets of rates:

- Internet + WiFi. This product includes a fiber modem equivalent and WiFi router. The end-user may not resell this product with the exception being the 5/5Gbps package which may be used to resell internet only within Multi-Tenant Units. An additional non-recurring charge will apply for MTUs utilizing the 5/5gbps for resale. The 150/150 Mbps product is limited to residential customers only.
- Internet + WiFi Low Income Program Eligible (LIPE). These rates include a discount and are available only to households who have applied for and been approved to receive JPUD Low Income Program Rates. This product includes a fiber modem equivalent and WiFi router. The end-user may not resell this product.

Note 2. WHOLESALE PON CONNECTION: These are the wholesale rates available to any approved Qualified ISPs who wish to purchase PON connections and resell them to end users. There are two sets of rates:

- Wholesale PON: PON connection via ethernet port at the End User premise. No WiFi, internet, or IP address included. Additional JPUD Network Transport or Internet Access required.
- Wholesale PON LIPE: Wholesale PON Connections serving End Users qualified by JPUD as eligible for Low Income Program rates. JPUD must provide verification before the rate is applied. JPUD strongly encourages ISPs to match the discount provided in the LIPE Rates.

Note 3. Network Transport. This is a lit Layer 2 fiber connection to a port on a JPUD Core Device. Network Transport requires an MRC and NRC charge per each End Point and per each Core Port utilized. End points require direct fiber connections and are not available over PON connections.

Core Ports may be utilized to aggregate services from multiple End Points or PON Connections. Network Transport connections are available to retail customers or on a wholesale basis to approved Qualified ISPs.

Note 4. Internet Access. This product can be purchased as a retail or wholesale product. There are separate rates for retail and wholesale connections. A corresponding non-recurring engineering charge applies to each internet access connection.

There are two options for purchasing this product – dedicated or metered.

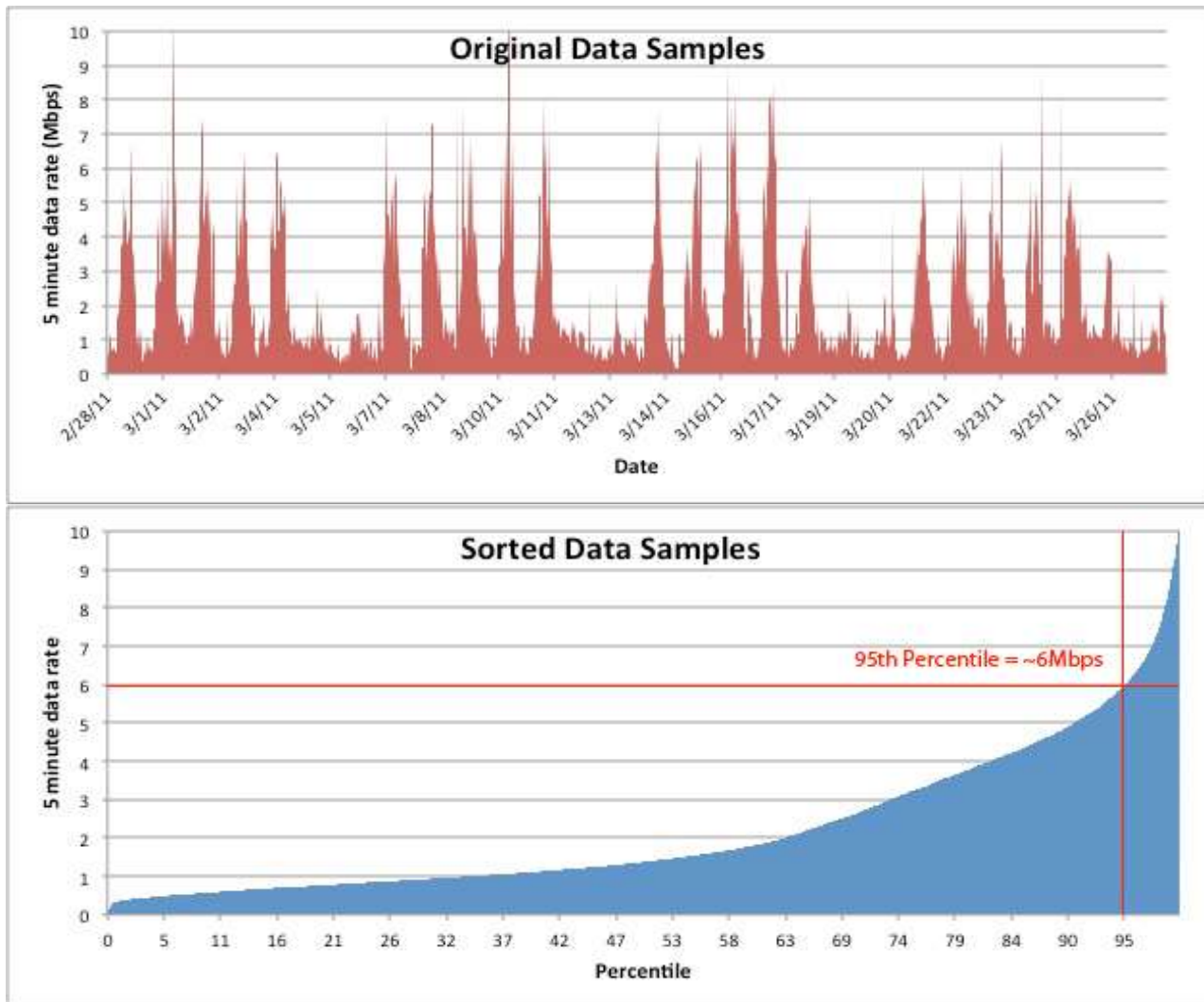
- Dedicated. With the dedicated product the customer or the ISP presubscribes to a specific broadband speed of their choosing (must be rounded to the nearest 100 Mbps). The monthly recurring charge is determined by multiplying the subscribed speed (e.g., 500 Mbps) by the per megabit per second rate assigned to their customer class (retail or wholesale). Service is delivered at or above the 95th percentile. A non-recurring engineering charge applies to each Internet Access connection.
- Metered. With the metered product the customer or the ISP subscribers will pay for actual peak internet usage for the month measured at the 95th percentile. Usage on the connection will be

JPUD BROADBAND NETWORK SCHEDULE OF RATES AND CHARGES

measured and billed at the 95th percentile of usage, as described below. A non-recurring engineering charge applies to each Internet Access connection.

Billing at the 95th Percentile

Over the course of the billing period, ISP data usage, measured in Mbps, is recorded in 5-minute intervals. At the end of the month these bandwidth recordings are sorted highest to lowest and the highest 5% of the recorded samples are removed. The ISP is then billed at the value on the published rate table that falls at the 95th percentile of bandwidth used.



Note 5. Legacy Rates. Legacy rates apply to any broadband connection utilizing network equipment tied to JPUD's Juniper core router. The District plans to eventually retire this network and doesn't plan on adding any new connections.

Any ISP using the legacy network will continue to be billed at the then current rates in place prior to the adoption of these rates, until such time as connections are cancelled or moved to the new JPUD Network being constructed in 2023 that will provide both PON and Active services.