



**Jefferson County  
Public Utility District**

*Celebrating 10 Years  
of Public Power*

# A Lot at Stake

**June 2023  
Newsletter**

**PUD Staking Engineer, Russell Miller, stands beside a service for new construction.**



It's a bright, beautiful day on the Toandos Peninsula along Thorndyke Drive, and PUD Staking Engineer, Russell Miller stands in the shade of a massive western red cedar tree. Beside him the property owner, Mike, poses questions about the electric connection to his future home build.

Each site presents new challenges: Distance to existing PUD equipment, rough terrain, utility easements—even Mike's favorite giant cedar tree. Everything must be accounted for when deciding a route for power to the home.

"I really like working with landowner-builders because they ask great questions and it's fun to see their enthusiasm," said Miller.

Whether a PUD capital project like the undergrounding of downtown PT power lines or a homeowner building their dream home, staking engineers like Miller ensure wires, transformers, meters, and much more are sized properly and placed for best use.

The staking engineer role covers all corners of the county and provides a pulse on the growth of the region. Miller has averaged 200 staking jobs per year, with that number trending downward slightly as the building market cools.

Jefferson PUD's electrical engineering team act as a resource for PUD customers to navigate the process of connecting to the grid.

"Two-thirds of my week is spent combing over maps, talking to customers, and working up material schedules," Miller said. The rest is spent in the field meeting with homeowners and project leads.

Miller describes this early step as the "ground truth". In the case of

Mike's property this involves plotting likely avenues for the 32-inch-deep trench needed for undergrounding the conduit and wire for the future home.

Miller returns to the office and begins to connect the dots. Utilizing mapping software, he provides the best lowest-cost solution for bringing power to the site. Finer details, such as installation standards and project timelines, are discussed with the customer prior to submitting for a county permit.

**see Stake on next page**

**Per PUD policy, all new electric services are undergrounded to minimize outage potential.**

## Account Security is our Policy

Safety and security are top priorities at the PUD. This extends to account information as well as electric or water service. At the PUD, your billing history, mail and service addresses, email, phone number and meter data are all considered Personal Identifiable Information (PII). The PUD will never sell your PII to marketing agencies or give it to someone not listed on the account.\* If you need to add an additional contact on your account to access and manage your PII, contact customer service ASAP. If you get a call

**From Jean Hall,  
Customer Service Director**

from someone demanding your PII and threatening to shut off your power, it's *not* the PUD and is likely a scam.

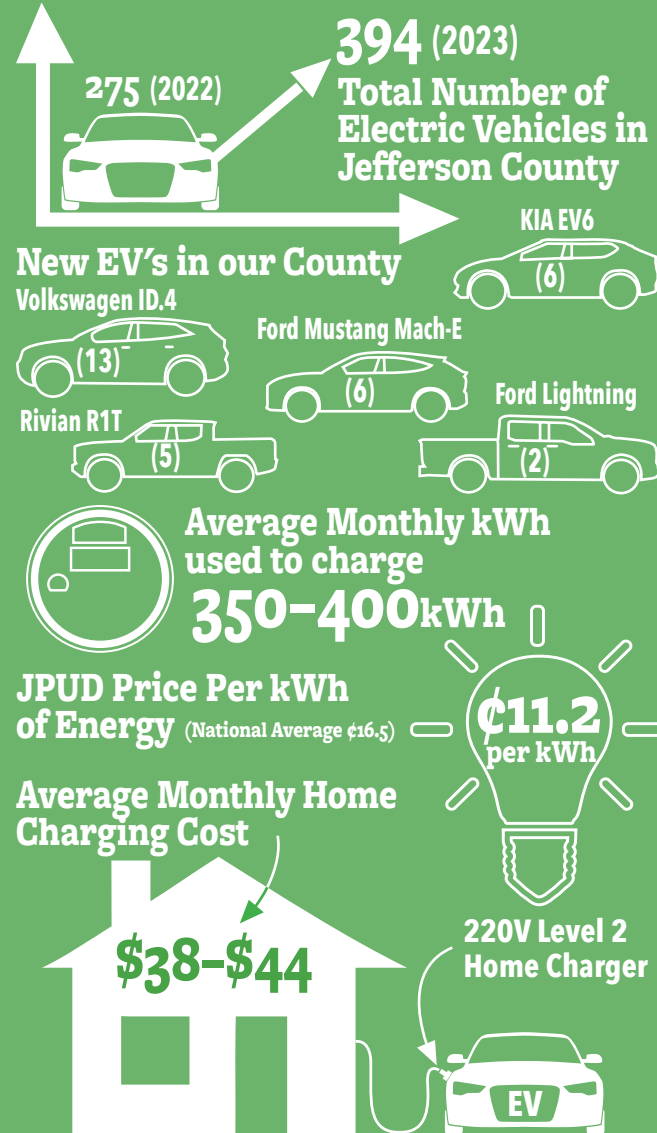
Learn more about how the PUD protects your information in our Data Privacy Policy on the Policies & Agreements page of our website: [jeffpud.org](http://jeffpud.org).



\*per our Data Privacy Policy, some PII is necessarily shared with partners and contractors who provide services (like heat pump rebates or bill printing) to the PUD.

**(360)385-5800 [jeffpud.org](http://jeffpud.org) 310 Four Corners Rd. Port Townsend WA 98368**

# EV Growth & Our Grid



Electrical Engineering Manager, Jimmy Scarborough (right), verifies conduit placement for Jefferson Transits EV bus charging infrastructure.



## Staking cont...

The staking process takes time, often longer than 6 weeks start to finish. Walking customers through the steps needed for service is vital to understanding the timeline and what is required by the customer for installation. Trenching and conduit placement are customer responsibilities.

Staking engineers work closely with multiple departments within the PUD to ensure service is delivered to the customer. They coordinate with customer service for establishing a new service, warehousing for materials needed and purchasing, accounting for billing of services, and line crews to make the final connection. The PUD engineering team is led by electrical engineering manager, Jimmy Scarborough and includes Miller, staking engineer Lori Rae, and GIS mapping specialist, Alex Gerrish.

There's a lot at stake when a PUD staking engineer hits the field, but the time it takes to design utilities ensures greater reliability for the future.

# FIBER CONSTRUCTION BEGINS THIS MONTH IN QUILCENE AND DISCOVERY BAY

The PUD line crew is slated to begin work stringing fiber optic cable in June. The fiber will extend out from our Quilcene and Discovery Bay substations onto power poles running along Hwy 101 and other major roadways. This is the first stage of fiber construction, bringing the fiber across the bulk of the project area before it begins branching onto side streets and heading to homes later this fall.

If you live between Mt. Walker and Discovery Bay and have been on the fence about signing

up for PUD fiber, now is the time!

There is no charge to have fiber installed to the first 60% of eligible homes in the project area. After 60%, the homeowner will have to pay a portion of the construction cost. Scan the QR with your smart phone to learn more and sign up today or visit: [fiber.jeffpud.org](http://fiber.jeffpud.org)



**Publicly Owned**  
**Not For Profit**  
**Locally Operated**

**Jeff Randall**  
Commissioner D1  
[jrandall@jeffpud.org](mailto:jrandall@jeffpud.org)  
(360) 316-6694

**Ken Collins**  
Commissioner D2  
[kcollins@jeffpud.org](mailto:kcollins@jeffpud.org)  
(360) 316-1475

**Dan Toepper**  
Commissioner D3  
[dtoepper@jeffpud.org](mailto:dtoepper@jeffpud.org)  
(360) 302-0448

**Kevin Streett**  
General Manager  
[kstreett@jeffpud.org](mailto:kstreett@jeffpud.org)  
(360) 385-8360