

Regular Meeting Agenda
Board of Commissioners
Tues, Dec 14, 2021 10:00 AM
Zoom
Port Townsend, WA 98368



To join online go to: <https://zoom.us/my/jeffcopud>. Follow the instructions to login. Meetings will open 5 minutes before they begin. TOLL FREE CALL IN #: 833-548-0282, Meeting ID# 4359992575#. Use *6 to mute or unmute. *9 to raise a hand to request to begin speaking.

Page

1. **Call to Order**

Per the Governor's Extended Proclamation 20-28 and in response to the COVID-19 Pandemic, Jefferson County PUD is no longer providing an in-person room for meetings of the BOC. All meetings will be held remotely via Zoom until otherwise informed by the Governor. Participant audio will be muted upon entry. Please unmute at the appropriate time to speak. If you are calling in, use **6 to mute and unmute and *9 to raise a hand to request to speak.*

2. **Agenda Review**

3. **Public Comment**

The public comment period is for any items not specifically listed on the current Agenda or for items listed on the Consent Agenda. The Chair may place time limits on public comments to allow the meeting to be conducted in an efficient and orderly manner. (15 min)

4. **Consent Agenda**

All matters listed below on the Consent Agenda are considered under one motion and will be enacted by one motion. There will be no separate discussion on those items. If discussion is desired, that item will be removed from the Consent Agenda and will be considered separately.

Consent Action

- | | | |
|------|---------------|--------|
| 4.1. | Prior Minutes | 4 - 12 |
|------|---------------|--------|

[PUD BOC Regular Meeting Minutes 8-17-2021 Draft \(2\).docx](#) 

- | | | |
|------|----------|---------|
| 4.2. | Vouchers | 13 - 45 |
|------|----------|---------|

[Voucher Approval Form for the Commissioners.pdf](#)  [Voucher](#)

- 4.3. Financial Report 46 - 59

[October 2021 Financials.pdf](#) 

- 4.4. Calendar 60

[PUD Calendar December 14, 2021.docx](#) 

5. Old Business

For the OLD and NEW BUSINESS section discussions: please hold public comment until each presentation is done but before the vote.

- 5.1. Water System Plan Volumes 2 & 3 61 - 65

[Agenda Report WSP Volumes 2 and 3 approval FINAL.pdf](#) 

[Res2021-0XX 2021 WSP Update Volumes 2 and 3 approval - FINAL.pdf](#)


- 5.2. Sewer Rates: Postage Stamp Option 66 - 67

[Agenda Report for Sewer Rate - Postage Stamp Discussion.pdf](#) 

- 5.3. Otto Street Building

6. New Business

- 6.1. CETA CEIP 68 - 83

[AGENDA REPORT CETA CEIP.docx](#) 

[CETA CEIP SURVEY JPUD.pdf](#)  [DRAFT JPUD CEIP PDF.pdf](#) 

- 6.2. Annual Meeting Requirements

- 6.3. Succession Planning 84 - 96

[Succession Planning 101MP.pdf](#) 

7. Manager and Staff Reports

For information only, not requiring a vote.

8. Commissioner Reports

9. Adjourn



**PUBLIC UTILITY DISTRICT NO. 1
of Jefferson County**

August 17, 2021

**Board of Commissioners
Regular Meeting**

Draft Minutes

The Regular Meeting of the Public Utility District No. 1 of Jefferson County (PUD) was called to order by the President of the Board of Commissioners (Board or BOC) at 5:00 p.m. on August 17, 2021, via Zoom. Present:

Commissioner Dan Toepper, President
Commissioner Kenneth Collins, Vice President
Commissioner Jeff Randall, Secretary
Kevin Streett, General Manager
Joel Paisner, General Counsel
Will O'Donnell, Communications Director
Mike Bailey, Financial Services Director
Jean Hall, Customer Service Director
Scott Bancroft, Operations Director
Samantha Harper, Engineering Director
Melanie Patterson, Human Resources Director
Annette Johnson, Executive Assistant/Records Admin.
Josh Garlock, Electrical Superintendent
Don McDaniel, Consultant

Page 1 of 9

Jefferson County PUD
Board of Commissioners
August 17, 2021 Regular Meeting
Draft Minutes

Cammy Brown, Recording Secretary

Page 2 of 9

Jefferson County PUD
Board of Commissioners
August 17, 2021 Regular Meeting
Draft Minutes

Page 5 of 96

1. CALL TO ORDER:

Commissioner Dan Toepper called the Regular Meeting of the Jefferson County PUD No. 1 Board of Commissioners for August 17, 2021, to order at 5:02 p.m. and read the Governor's Extended Proclamation 20-28 in response to the COVID-19 pandemic.

All three commissioners were present. It was determined there was a quorum.

2. AGENDA REVIEW: Additions or corrections to Agenda. General Manager Kevin Streett had some changes to the agenda.

- ☒ Move Item No. 5.1 under Manager's Report to Item No. 7.4 New Business.
- ☒ Add a calendar check under Manager Staff and Reports Item No.5.6.

MOTION: Commissioner Jeff Randall made a motion to accept the agenda as amended. Commissioner Kenneth Collins seconded the motion. Motion carried unanimously.

3. PUBLIC COMMENT: Commissioner Dan Toepper presented the guidelines for members of the public to submit their comments. Topics abbreviated. No public comment.

4. CONSENT AGENDA: Commissioner Dan Toepper read the Consent Agenda guidelines.

Small typo correction in Minutes of May 18, 2021. Under Paragraph 8.1 Commissioner Dan Toepper's name spelled wrong

MOTION: Commissioner Kenneth Collins made a motion to approve and adopt the Consent Agenda as amended. Commissioner Jeff Randall seconded the motion. Motion carried unanimously.

4.1 PRIOR MINUTES:

PUD BOC Joint Meeting Minutes with CAB 5-10-2021.
PUD BOC Regular Meeting Minutes 5-18-2021.

4.2 VOUCHERS AND WRITE OFFS

Voucher Approval Form for the Commissioners.

Page 3 of 9

Jefferson County PUD
Board of Commissioners
August 17, 2021 Regular Meeting
Draft Minutes

Voucher Certification with Supporting Warrant Register & Payroll

PAYMENTS TO BE APPROVED

WARRANTS	AMOUNT	DATE
Accounts Payable: #126769 to #126807	\$ 279,878.33	07/29/2021
Accounts Payable: #126808 to #126862	\$ 585,581.49	08/05/2021
Payroll Checks: # 70926 to # 70926	\$ 2,213.45	07/26/2021
Payroll Checks: # 70927 to # 70933	\$ 11,722.29	08/06/2021
Payroll Direct Deposit:	\$ 139,759.01	08/06/2021

TOTAL INVOICES PAID: \$1,019,315.57

WIRE TRANSFERS PAID	AMOUNT	DATE
Peterson Lake	\$ 14,328.62	08/02/2021

PAYMENT TOTAL \$1,033,483.19

4.3 Financial Report

Agenda Report Written Off Accounts 08-17-2021.

Written Off Accounts Motion 08-17-2021.

4.4 Calendar

PUD Calendar August 17, 2021.

4.5 Paid Family Medical Leave for Employee Handbook

WA State PFML Policy 8-17-2021.

END OF CONSENT AGENDA

5. MANAGER AND STAFF REPORTS.

5.1 Way Agreement. Moved to 7.4 New Business.

5.2 PUD Outside Employment. Human Resources Director Melanie Patterson gave a report on employees who have employment outside of the PUD that are related to other businesses. There was some discussion.

5.3 ICG Meeting Agenda for August 19th meeting and September 23rd. No meeting August 19th. Next meeting is September 23, 2021.

5.4 Greenhouse Gas Reduction Plan. Communications Director Will O'Donnell gave a report. The PUD needs to have a Greenhouse Gas Reduction Plan to apply for some grants. Presently the PUD does not have one. Discussion only.

5.5 Solar Panel Grant Opportunity. Communications Director Will O'Donnell gave a report. This is a grant opportunity for the PUD. Payback for total project is thirty years. This project would bring benefits to the customer after thirty years.

5.6 Calendar. General Manager Kevin Streett confirmed that the meeting scheduled for August 23rd was going to start at 2:30pm to 4:30pm. It will be advertised as a joint meeting with the Citizen Advisory Board. Gordon Wilson from FCS will give a presentation.

6. OLD BUSINESS:

6.1 Sewer Rates. Engineering Director Samantha Harper gave a presentation. There was considerable discussion. There are 350 sewer customers. All three commissioners were in consensus with a five-year phase in. This item will be on the agenda at the next meeting of the BOC. There was considerable discussion.

6.2 Employee Tuition Reimbursement Policy. Human Resources Director Melanie Patterson gave a report on the employee tuition reimbursement policy and the pay back provision based on how long an employee stays with the district.

Page 5 of 9

MOTION: Commissioner Jeff Randall made a motion to authorize the Employee Tuition Reimbursement Policy as presented. Commissioner Kenneth Collins seconded the motion. Motion carried unanimously.

6.3 Budget Update. Finance Director Mike Bailey gave a report. There was considerable discussion. Details can be heard on audio recording at www.jeffpud.org. Customer Service Director Jean Hall will bring back the low-income report at the next BOC meeting.

6.4 Recruitment Strategies. General Manager Kevin Streett gave a report on the recruiting process. The PUD has run into some roadblocks in trying to hire skilled people. Available housing is a major roadblock. PUD would like to be able to find a couple of houses to purchase, to then rent, short-term for new hires. Staff is trying to strategize ways to incentivize those who may be looking for work. Human Resources Director Melanie Patterson gave a report on what the PUD could offer new recruits. At a future meeting there will be a revision presented to the BOC to the employee handbook and a small section on what the PUD can offer on employee recruitment.

7. NEW BUSINESS.

7.1 Long Term Disability Coverage for Employees in Laborers' Union. Human Resources Director Melanie Patterson gave a report on adding long term disability coverage for employees in the Laborers' Union. Fiscal impact would be \$424.00 per month to add eighteen employees. This item was not included in the contract and was an oversight.

MOTION: Commissioner Kenneth Collins made a motion to approve the long-term disability benefit for the employees who are covered by the labor agreement. Commissioner Jeff Randall seconded the motion. Motion carried unanimously.

7.2 Long Term Care Policy. Human Resources Director Melanie Patterson gave a report and historical information. Washington state has mandated a long-term care insurance requirement for employees beginning January 1, 2022.

MOTION: Commissioner Jeff Randall made a motion to approve the Life+LTC Rider to its benefit offerings to the employees of the Jefferson County Public Utility District No. 1. Commissioner Kenneth Collins seconded the motion. Motion carried unanimously.

RECESS. At 7:18 p.m. Commissioner Dan Toepper called a five-minute recess. The session of the Jefferson County Public Utility District Board of Commissioners meeting reconvened at 7:23 p.m. Commissioner Dan Toepper called for a roll call of the commissioners. A quorum was established.

7.3 Hadlock Sewer Memorandum of Understanding with Jefferson County.
Engineering Director Samantha Harper gave a background report and went over the Memorandum of Understanding with Jefferson County.

MOTION: Commissioner Kenneth Collins made a motion to authorize the General Manager to sign the Memorandum of Understanding for the Port Hadlock Sewer. Commissioner Jeff Randall seconded the motion. Motion carried unanimously.

7.4 EDC Discussion: Board Composition and Hiring. General Manager Kevin Streett gave a report and some background information on the Economic Development Council.

8. COMMISSIONER REPORTS.

Commissioner Jeff Randall no report.

Commissioner Kenneth Collins:

8/06 Attended JBAT meeting.
8/09 Attended PUD BOC Special meeting on Budget.
8/10 Attended PUD BOC Special meeting on Public Power Council.
8/10 Participated on call with a customer regarding a water leak.
8/11 Attended NoaNet Board meeting.
8/11 Met with General Manager Kevin Streett (telephone conference).
8/12 Attended PUD BOC Special Meeting on Strategic Planning.
8/13 Attended JBAT meeting.
8/16 Met with General Manager Kevin Streett.
8/18 Will attend ICG meeting.

Page 7 of 9

8/20 Will attend JBAT meeting.
 8/23 Will attend WPUDA meeting.
 8/25 Will attend CAB meeting.
 8/27 Will attend JBAT meeting.
 9/01 Will attend PPC meeting.
 9/02 Will attend PPC meeting.
 9/03 Will attend JBAT meeting.
 9/03 Will meet with General Manager Kevin Streett.
 9/07 Will participate in WPUDA Budget meeting.

Commissioner Dan Toepper:

8/04 Attended PPC meeting.
 8/05 Attended PPC Executive Committee meeting (report).
 8/05 Attended Port Ludlow Village Council meeting.
 8/06 Met with General Manager Kevin Streett.
 8/09 Attended CAB meeting.
 8/09 Attended PUD BOC Special Meeting on Budget.
 8/10 Attended PUD BOC Special Meeting on Public Power Council.
 8/11 Participated in WPUDA Commissioner Education Steering Committee meeting.
 8/12 Attended PUD BOC Special Meeting on Strategic Planning.
 8/13 Attended JBAT meeting.
 8/16 Met with General Manager Kevin Streett.
 8/18 thru
 8/27 Will be gone on vacation and unavailable.
 8/23 Will attend joint meeting.
 8/30 Will meet with General Manager Kevin Streett.
 9/01 and
 9/02 Will attend PPC meeting.

9. ADJOURN.

Commissioner Dan Toepper declared the August 17, 2021, Regular Meeting of the Board of Commissioners of the Jefferson County Public Utility District No. 1 adjourned at 8:03 p.m.

 Minutes prepared by

Page 8 of 9

Jefferson County PUD
 Board of Commissioners
 August 17, 2021 Regular Meeting
 Draft Minutes

Recording Secretary Cammy Brown

Approved:

Commissioner Jeff Randall, Secretary

Date

Attest:

Commissioner Dan Toepper, President

Date

Commissioner Kenneth Collins, Vice President

Date

Please note PUD Board of Commissioner meetings are audio recorded and posted to the PUD website at www.jeffpud.org, usually within 1-2 business days of each meeting. If you experience any difficulty accessing a particular recording, you may call 360.385.5800 for assistance. Jefferson PUD provides reasonable accommodations to persons with disabilities. We invite any person with special needs to contact our staff at 360.385.8351 at least 24 hours before the meeting to discuss any special accommodations.

VOUCHER APPROVAL FORM

We, the undersigned Board of Commissioners of Public Utility District No. 1 of Jefferson County hereby approve pending payments for transactions greater than \$100,000, if any. The following transactions are approved from the General Fund in the amount of **\$3,146,918.61** on this **14TH** day of **DECEMBER** **2021** ;

Dan Toepper
President

Kenneth Collins
Vice President

Jeff Randall
Secretary

PAYMENTS TO BE APPROVED:

WARRANTS				AMOUNT	DATE
Accounts Payable:	# 127512	to # 127565	\$	500,426.48	11/10/2021
Accounts Payable:	# 127566	to # 127596	\$	268,485.00	11/18/2021
Accounts Payable:	# 127597	to # 127644	\$	484,342.34	11/24/2021
Accounts Payable:	# 127645	to # 127741	\$	157,982.09	11/29/2021
Accounts Payable:	# 127742	to # 127779	\$	176,350.69	12/2/2021
Payroll Checks:	# 70960	to # 70963	\$	8,264.22	11/12/2021
Payroll Checks:	# 70964	to # 70967	\$	9,279.95	11/26/2021
Payroll Direct Deposit:			\$	147,867.92	11/12/2021
Payroll Direct Deposit:			\$	192,058.30	11/26/2021

TOTAL INVOICES PAID **\$1,945,056.99**

WIRE TRANSFERS PAID	AMOUNT	DATE
BPA	\$ 1,187,533.00	11/12/2021
Peterson Lake	\$ 14,328.62	12/1/2021

PAYMENT TOTAL **\$3,146,918.61**

VOIDED WARRANTS
158 \$ 14,328.63

VOUCHER CERTIFICATION FORM

I, the undersigned, do hereby certify under penalty of perjury that the materials have been furnished, the services rendered or the labor performed as described herein, that any advance payment is due and payable pursuant to a contract or is available as an option for full or partial fulfillment of a contractual obligation, and that the claim is a just and due obligation against Public Utility District No. 1 of Jefferson County, and that I am authorized to authenticate and certify to said claims, and I, the undersigned, do hereby certify under penalty of perjury that claims for employee and commissioner expenses are just and due against Public Utility District No. 1 of Jefferson County.

Signed: Mike Bailey
Mike Bailey, Financial Director / District Auditor

12/8/2021
Date

VOUCHER CLAIM FORMS FOR INVOICES PAID:

WARRANTS	AMOUNT	DATE
Accounts Payable: # 127512 to # 127565	\$ 500,426.48	11/10/2021
Accounts Payable: # 127566 to # 127596	\$ 268,485.00	11/18/2021
Accounts Payable: # 127597 to # 127644	\$ 484,342.34	11/24/2021
Accounts Payable: # 127645 to # 127741	\$ 157,982.09	11/29/2021
Accounts Payable: # 127742 to # 127779	\$ 176,350.69	12/2/2021
Payroll Checks: # 70960 to # 70963	\$ 8,264.22	11/12/2021
Payroll Checks: # 70964 to # 70967	\$ 9,279.95	11/26/2021
Payroll Direct Deposit:	\$ 147,867.92	11/12/2021
Payroll Direct Deposit:	\$ 192,058.30	11/26/2021

TOTAL INVOICES PAID \$1,945,056.99

WIRE TRANSFERS PAID	AMOUNT	DATE
BPA	\$ 1,187,533.00	11/12/2021
Peterson Lake	\$ 14,328.62	12/1/2021

GRAND TOTAL \$3,146,918.61

VOIDED WARRANTS
158 \$14,328.63

12/08/2021 12:16:02 PM

Accounts Payable Check Register

Page 1

11/09/2021 To 11/28/2021

Bank Account: 1 - 1ST SECURITY - AP

Check / Tran Date	Pmt Type	Vendor	Vendor Name	Reference	Amount
127512 11/10/21	CHK	10481	AMAZON	FILE ORGANIZER	19.01
				FILE ORGANIZER	4.76
Total for Check/Tran - 127512:					23.77
127513 11/10/21	CHK	10451	ASCENT LAW PARTNERS LLP	FLAT FEE BOC MEETINGS (225-104) OCT 2021	5,600.00
				FLAT FEE BOC MEETINGS (225-104) OCT 2021	1,400.00
				GENERAL UTILITY (225-102) OCT 2021	9,720.00
				GENERAL UTILITY (225-102) OCT 2021	2,430.00
Total for Check/Tran - 127513:					19,150.00
127514 11/10/21	CHK	10688	MIKE BAILEY	PHONE ALLOWANCE - OCT 2021	36.00
				PHONE ALLOWANCE - OCT 2021	9.00
Total for Check/Tran - 127514:					45.00
127515 11/10/21	CHK	10027	BERNT ERICSEN EXCAVATING, INC	VAC HOLE - PORT OF PT 8/06	1,249.20
				EXCAVATING - 1042 TURTLEBACK RD 2/03	1,553.25
Total for Check/Tran - 127515:					2,802.45
127516 11/10/21	CHK	10038	CASCADE COLUMBIA DISTRIBUTION C	NALCO 8105 55 GALLON DRUM	3,144.05
127517 11/10/21	CHK	10042	CELLNET TECHNOLOGY INC	METER READS - OCT 2021	27,721.64
127518 11/10/21	CHK	10044	CENTURY LINK QCC-P	PHONE SERVICE - OCT 2021	10.11
				PHONE SERVICE - OCT 2021	2.53
Total for Check/Tran - 127518:					12.64
127519 11/10/21	CHK	10051	CITY OF PORT TOWNSEND-UTILITY	KEARNEY SUBST - OCT 2021	194.72
127520 11/10/21	CHK	10055	CONSOLIDATED ELECTRICAL DISTRIB	CONDUIT COUPLING	1,034.38
127521 11/10/21	CHK	10070	DOUBLE D ELECTRICAL, INC	EMRG GENERATOR REPAIR - 83 PINECREST DR	1,378.43
				REWIRE SEPTIC SYS - 125 DICKEY ST	2,648.04
				EXCAVTING - 31 VISTA BLVD 9/19	711.88
Total for Check/Tran - 127521:					4,738.35
127522 11/10/21	CHK	10900	ENGINEERING SUPPLY COMPANY INC.	TOPNETLIVE RTKNETWORK 1YR 10/28-10/28/22	1,500.00

12/08/2021 12:16:02 PM

Accounts Payable Check Register

Page 2

11/09/2021 To 11/28/2021

Bank Account: 1 - 1ST SECURITY - AP

Check / Tran Date	Pmt Type	Vendor	Vendor Name	Reference	Amount
127523 11/10/21	CHK	10821	FCS GROUP	RATE STUDY SVC - THRU 10/22/2021	3,001.25
				RATE STUDY SVC - THRU 10/22/2021	3,001.25
Total for Check/Tran - 127523:					6,002.50
127524 11/10/21	CHK	10094	GENERAL PACIFIC, INC	DROP FIBER ATTACHMENT BRACKET	106.37
				SPLICE	49.10
				WEDGE CLAMP	294.57
				UNISTRUT CLAMP	469.13
Total for Check/Tran - 127524:					919.17
127525 11/10/21	CHK	10095	GOOD MAN SANITATION, INC	310 4CRNRS-RESTROOM UNIT 10/12-11/7/2021	122.40
				310 4CRNRS-RESTROOM UNIT 10/12-11/7/2021	30.60
Total for Check/Tran - 127525:					153.00
127526 11/10/21	CHK	10104	HADLOCK BUILDING SUPPLY, INC.	SEWER - TOOLS	27.25
				W.LELAND VALLEY RD - PVC CONDUIT	7.63
				DISCOVERY BAY RIDGE - MATERIALS	10.67
				HERB BECK - KEY	2.17
Total for Check/Tran - 127526:					47.72
127527 11/10/21	CHK	10396	JEAN M HALL	PHONE ALLOWANCE - OCT 2021	36.00
				PHONE ALLOWANCE - OCT 2021	9.00
Total for Check/Tran - 127527:					45.00
127528 11/10/21	CHK	10693	RITA J HOAK	WELLNESS HOLIDAY BAG	122.58
				WELLNESS HOLIDAY BAG	30.65
Total for Check/Tran - 127528:					153.23
127529 11/10/21	CHK	10113	HRA VEBA TRUST CONTRIBUTIONS	VEBA BENEFIT OCTOBER 2021	2,240.00
				VEBA DEDUCTION OCTOBER 2021	1,325.00
Total for Check/Tran - 127529:					3,565.00
127530 11/10/21	CHK	10114	IBEW LOCAL UNION NO 77	UNION DUES IBEW - OCTOBER 2021	2,232.12
127531 11/10/21	CHK	10839	IRBY ELECTRICAL UTILITES	SECONDARY CONNECTOR BLOCK 6 HOLE-350	1,064.82
				ALUMAFORM MOUNT BRACKET 12MW-24	1,933.25

12/08/2021 12:16:02 PM

Accounts Payable Check Register

Page 3

11/09/2021 To 11/28/2021

Bank Account: 1 - 1ST SECURITY - AP

Check / Tran Date	Pmt Type	Vendor	Vendor Name	Reference	Amount
Total for Check/Tran - 127531:					2,998.07
127532 11/10/21	CHK	10281	JEFFCO EFTPS	EMPLOYEES' MEDICARE TAX	3,468.51
				EMPLOYER'S MEDICARE TAX	3,356.01
				EMPLOYEES' FICA TAX	10,372.36
				EMPLOYER'S FICA TAX	10,372.36
				EMPLOYEES' FEDERAL WITHHOLDING	13,095.73
				EMPLOYEES' FEDERAL WITHHOLDING TAX	13,593.57
Total for Check/Tran - 127532:					54,258.54
127533 11/10/21	CHK	10532	JEFFERSON COUNTY PUD PAYROLL ACPR 11.12.2021-DIRECT DEPOSIT CHECKS		147,867.92
			PR 11.12.2021-MANUAL CHECKS		8,264.22
Total for Check/Tran - 127533:					156,132.14
127534 11/10/21	CHK	10121	JEFFERSONCO UTILITY COORDINATIN	COORDINATING COUNCIL DUES - 2022 1Y	100.00
127535 11/10/21	CHK	10129	JIFFY LUBE	VEH# 415 - OIL CHANGE	101.91
127536 11/10/21	CHK	10320	ANNETTE JOHNSON	PHONE ALLOWANCE - OCT 2021	36.00
				PHONE ALLOWANCE - OCT 2021	9.00
Total for Check/Tran - 127536:					45.00
127537 11/10/21	CHK	10348	KEMP WEST, INC	TREE TRIMMING-HAZEL POINT/JOHNSON RD	29,259.00
127538 11/10/21	CHK	10134	LEMAY MOBILE SHREDDING	SHRED 4CRNR OCT-21	144.20
				SHRED 4CRNR OCT-21	36.05
Total for Check/Tran - 127538:					180.25
127539 11/10/21	CHK	10153	MURREY'S DISPOSAL CO., INC.	DISPOSAL 4CRNR 2YD CONT 1XWK OCT-21	166.37
				DISPOSAL 4CRNR 2YD CONT 1XWK OCT-21	41.59
				2YD OCC-4CRNRS OCT-2021	120.73
				2YD OCC-4CRNRS OCT-2021	30.18
				DISPOSAL 4CRNR 30YD ROLL OFF RNTL OCT-21	553.83
				DISPOSAL 4CRNR 30YD ROLL OFF RNTL OCT-21	138.46
				DISPOSAL 21 KENNEDY OCT-21	37.65
				DISPOSAL 21 KENNEDY OCT-21	37.64

12/08/2021 12:16:02 PM

Accounts Payable Check Register

Page 4

11/09/2021 To 11/28/2021

Bank Account: 1 - 1ST SECURITY - AP

Check / Tran Date	Pmt Type	Vendor	Vendor Name	Reference	Amount
				DISPOSAL 210 2YD CONT 1XWK OCT-21	162.35
				DISPOSAL 210 2YD CONT 1XWK OCT-21	40.59
				Total for Check/Tran - 127539:	1,329.39
127540 11/10/21	CHK	10164	NW LABORERS 252 (DUES)	UNION DUES LABORERS - OCTOBER 2021	720.00
127541 11/10/21	CHK	10631	WILLIAM P O'DONNELL	NWPPA INVTNCOMMCONF 10/11-10/14 TRVL EXP	309.15
				NWPPA INVTNCOMMCONF 10/11-10/14 TRVL EXP	77.29
				PHONE ALLOWANCE - OCT 2021	36.00
				PHONE ALLOWANCE - OCT 2021	9.00
				Total for Check/Tran - 127541:	431.44
127542 11/10/21	CHK	10167	OFFICE DEPOT	OPERATIONS - OFFICE SUPPLIES	44.66
				OPERATIONS - OFFICE SUPPLIES	11.17
				WTRCRW/LNECRW/OPS - OFFICE SUPPLIES	188.98
				WTRCRW/LNECRW/OPS - OFFICE SUPPLIES	47.25
				OPERATIONS - OFFICE SUPPLIES	9.59
				OPERATIONS - OFFICE SUPPLIES	2.40
				Total for Check/Tran - 127542:	304.05
127543 11/10/21	CHK	10169	OLYCAP	PWRBST/OLYCAP OCTOBER 2021	1,256.01
127544 11/10/21	CHK	10170	OLYMPIC EQUIPMENT RENTALS	200 CHIM CREEK EST-EXCAVATOR RNTL&DELIV	218.20
127545 11/10/21	CHK	10175	PACIFIC UNDERWRITERS CORP	COMM CRIME BOND 1Y 12/14/2021-12/13/2022	1,051.20
				COMM CRIME BOND 1Y 12/14/2021-12/13/2022	262.80
				Total for Check/Tran - 127545:	1,314.00
127546 11/10/21	CHK	10549	PENINSULA LEGAL SECRETARIAL SER	TRANSCRIPTION SVC 10/22-11/3/21	336.00
				TRANSCRIPTION SVC 10/22-11/3/21	84.00
				Total for Check/Tran - 127546:	420.00
127547 11/10/21	CHK	10857	PETROCARD, INC.	REPLACEMENT FUEL NOZZLE	235.92
127548 11/10/21	CHK	10188	PLATT ELECTRIC SUPPLY	COMPRESSION LUGS	50.12
				CONDUIT BELLEND	293.52

12/08/2021 12:16:02 PM

Accounts Payable Check Register

Page 5

11/09/2021 To 11/28/2021

Bank Account: 1 - 1ST SECURITY - AP

Check / Tran Date	Pmt Type	Vendor	Vendor Name	Reference	Amount
				CONDUIT CAP	312.96
				CONDUIT SWEEP	3,184.46
				COUPLING	256.93
				SPLIT CONDUIT	659.23
				COUPLING	368.58
				REPLACEMENT CUTTER BLADE	727.85
				Total for Check/Tran - 127548:	5,853.65
127549 11/10/21	CHK	10193	PORT TOWNSEND LEADER	PO:JANITORIAL SRVCS BID 10/13/21	28.80
				PO:JANITORIAL SRVCS BID 10/6/21	28.80
				LEGALS:REQUEST PROPOSAL 10/27/21	54.00
				LEGALS:INVITE TO BID FIBER OPTIC 10/6/21	44.00
				LEGALS:BID WOOD POLE INSPECT 10/13/21	46.00
				LEGALS:BID WOOD POLE INSPECT 10/6/21	46.00
				LEGALS:BOC MTNG TIME CHNG 10/27/2021	9.60
				DISPLAY AD 6x5 FIRE SAFETY 10/6/21	408.00
				PO:BID MARGARET WAY EXT 10/13/21	58.00
				PO:BID MARGARET WAY EXT 10/20/21	58.00
				PO:JANITORIAL SRVCS BID 10/13/21	7.20
				PO:JANITORIAL SRVCS BID 10/6/21	7.20
				LEGALS:BOC MTNG TIME CHNG 10/27/2021	2.40
				DISPLAY AD 6x5 FIRE SAFETY 10/6/21	102.00
				Total for Check/Tran - 127549:	900.00
127550 11/10/21	CHK	10203	PURMS JOINT SELF INSURANCE FUND	ASSESSMENT ADJUSTMENT	-6,695.45
				HEALTH & WELFARE OCT 2021	66,674.23
				Total for Check/Tran - 127550:	59,978.78
127551 11/10/21	CHK	10210	RICOH USA, INC	210 4 CRNRS (0109) IMAGES OCT 2021	42.68
				210 4 CRNRS (0109) IMAGES OCT 2021	13.12
				Total for Check/Tran - 127551:	55.80
127552 11/10/21	CHK	10869	RITZ SAFETY LLC	FR CLOTHING	159.04

12/08/2021 12:16:02 PM

Accounts Payable Check Register

Page 6

11/09/2021 To 11/28/2021

Bank Account: 1 - 1ST SECURITY - AP

Check / Tran Date	Pmt Type	Vendor	Vendor Name	Reference	Amount
				FR CLOTHING	106.79
				FR CLOTHING	742.24
				FR CLOTHING	178.88
				FR CLOTHING	171.81
				FR CLOTHING	157.25
				FR CLOTHING	105.83
				Total for Check/Tran - 127552:	1,621.84
127553 11/10/21	CHK	9998	JANE SCHEEF	Credit Balance Refund	44.69
127554 11/10/21	CHK	10331	ST VINCENT DE PAUL	PWRBST/ST VINCENT DE PAUL OCTOBER 2021	1,256.01
127555 11/10/21	CHK	10400	DONALD K STREETT	PHONE ALLOWANCE - OCT 2021	45.00
127556 11/10/21	CHK	10251	UGN - JEFFERSON COUNTY	UNITED GOOD NEIGHBORS EE	15.00
127557 11/10/21	CHK	10620	UPS	SHIPPING FEE - FR CLOTHING RETURN	30.35
127558 11/10/21	CHK	10256	UTILITIES UNDERGROUND LOCATION	LOCATES - OCT 2021	83.85
				LOCATES - OCT 2021	72.24
				Total for Check/Tran - 127558:	156.09
127559 11/10/21	CHK	10328	VERIZON CONNECT NWF INC.	CUST#JEFF007 ALL VEH GPS - OCT 2021	479.43
				CUST#JEFF007 ALL VEH GPS - OCT 2021	186.57
				Total for Check/Tran - 127559:	666.00
127560 11/10/21	CHK	10260	WA STATE DEFERRED COMPENSATIONPL DEFERRED COMP EE		12,602.11
				PL DEFERRED COMP ER	5,427.80
				Total for Check/Tran - 127560:	18,029.91
127561 11/10/21	CHK	10265	WA STATE DEPT OF RETIREMENT SYSTRETIREMENT/REPORT #8828 OCT 2021-PERS 2		79,062.36
				RETIREMENT/REPORT #8828 OCT 2021-PERS 3	7,757.41
				Total for Check/Tran - 127561:	86,819.77
127562 11/10/21	CHK	10267	WA STATE SUPPORT REGISTRY	PL CHILD SUPPORT EE	165.50
127563 11/10/21	CHK	10271	WESCO RECEIVABLES CORP	ANCHOR HELICAL 12"	1,829.39

12/08/2021 12:16:02 PM

Accounts Payable Check Register

Page 7

11/09/2021 To 11/28/2021

Bank Account: 1 - 1ST SECURITY - AP

Check / Tran Date	Pmt Type	Vendor	Vendor Name	Reference	Amount
127564 11/10/21	CHK	10274	WESTBAY AUTO PARTS, INC.	VEH# 119 & STOCK - LOW BEAM LIGHT BULB	41.93
				VEH# 415 - AIR FILTER	52.50
Total for Check/Tran - 127564:					94.43
127565 11/10/21	CHK	9998	MADELINE WOOD	Credit Balance Refund	75.61
127566 11/18/21	CHK	10447	ANIXTER INC.	MULTI-TAP 6	392.76
				MULTI-TAP 4,MULTI-TAP 6,POLYWATER	3,273.00
				POLYWATER	248.75
				MULTI-TAP 6	1,204.46
				LOCKNUT WASHER,FUSE,CUTOUT LOADBREAK	5,393.90
				LOCKNUT WASHER	60.01
				FUSE	272.76
Total for Check/Tran - 127566:					10,845.64
127567 11/18/21	CHK	10823	BHC CONSULTANTS LLC	QUILCENE W TANK PROF SVC 9/25-10/22	10,927.89
127568 11/18/21	CHK	10045	CENTURY LINK-S	PHONE SERVICE - NOV 2021	113.85
				PHONE SERVICE - NOV 2021	28.46
				PHONE SERVICE - NOV 2021	45.78
				PHONE SERVICE - NOV 2021	11.44
Total for Check/Tran - 127568:					199.53
127569 11/18/21	CHK	10046	CENTURYLINK	LOW SPD DATA & 2WIRE NOV 2021	78.06
				LOW SPD DATA & 2WIRE NOV 2021	19.51
				LOW SPD DATA & 2WIRE NOV 2021	31.17
				LOW SPD DATA & 2WIRE NOV 2021	7.79
Total for Check/Tran - 127569:					136.53
127570 11/18/21	CHK	10047	CENTURYLINK-POLES	#WABJWA0275-POLERNL 1Y 4/01/20-3/21/21	2,404.06
127571 11/18/21	CHK	10050	CHS	SALT BAG RUST PELLETS - SKYWATER	108.99
127572 11/18/21	CHK	10621	CRAIG LABENZ	WEBSITE DEVELOPMENT - AUG-OCT 2021	675.00
				WEBSITE DEVELOPMENT - AUG-OCT 2021	168.75

12/08/2021 12:16:02 PM

Accounts Payable Check Register

Page 8

11/09/2021 To 11/28/2021

Bank Account: 1 - 1ST SECURITY - AP

Check / Tran Date	Pmt Type	Vendor	Vendor Name	Reference	Amount
Total for Check/Tran - 127572:					843.75
127573 11/18/21	CHK	10078	ESCI	ESCI SAFETY TRAINING - NOV 2021	1,428.75
127574 11/18/21	CHK	10781	EVERGREEN CONSULTING GROUP, LLC	ENERGY CONSERVATION REBATE	6,954.92
				ENERGY CONSERVATION REBATE	1,300.00
				ENERGY CONSERVATION REBATE	2,100.00
				ENERGY CONSERVATION REBATE	2,100.00
				ENERGY CONSERVATION REBATE	244.80
				ENERGY CONSERVATION REBATE	600.00
				ENERGY CONSERVATION REBATE	900.00
				ENERGY CONSERVATION REBATE	1,300.00
				ENERGY CONSERVATION REBATE	50.00
				ENERGY CONSERVATION REBATE	1,626.00
				ENERGY CONSERVATION REBATE	1,300.00
				ENERGY CONSERVATION REBATE	1,300.00
				ENERGY CONSERVATION REBATE	600.00
				ENERGY CONSERVATION REBATE	1,300.00
				ENERGY CONSERVATION REBATE	900.00
				ENERGY CONSERVATION REBATE	2,100.00
				ENERGY CONSERVATION REBATE	1,300.00
				ENERGY CONSERVATION REBATE	900.00
				ENERGY CONSERVATION REBATE	1,300.00
				ENERGY CONSERVATION REBATE	705.90
				ENERGY CONSERVATION REBATE	342.00
				ENERGY CONSERVATION REBATE	1,300.00
				ENERGY CONSERVATION REBATE	2,100.00
				ENERGY CONSERVATION REBATE	2,100.00
				ENERGY CONSERVATION REBATE	1,300.00
				ENERGY CONSERVATION REBATE	1,300.00
				ENERGY CONSERVATION REBATE	1,300.00
				ENERGY CONSERVATION REBATE	1,300.00

12/08/2021 12:16:02 PM

Accounts Payable Check Register

Page 9

11/09/2021 To 11/28/2021

Bank Account: 1 - 1ST SECURITY - AP

Check / Tran Date	Pmt Type	Vendor	Vendor Name	Reference	Amount
				ENERGY CONSERVATION REBATE	1,300.00
				ENERGY CONSERVATION REBATE	1,300.00
				ENERGY CONSERVATION REBATE	1,300.00
				ENERGY CONSERVATION REBATE	1,300.00
				ENERGY CONSERVATION REBATE	1,300.00
				ENERGY CONSERVATION REBATE	2,380.00
				ENERGY CONSERVATION REBATE	2,100.00
				ENERGY CONSERVATION REBATE	1,300.00
				ENERGY CONSERVATION REBATE	1,300.00
				ENERGY CONSERVATION REBATE	1,300.00
				ENERGY CONSERVATION REBATE	700.00
				ENERGY CONSERVATION REBATE	2,789.06
				ENERGY CONSERVATION REBATE	600.00
				ENERGY CONSERVATION REBATE	900.00
				ENERGY CONSERVATION REBATE	1,300.00
				ENERGY CONSERVATION REBATE	1,300.00
				ENERGY CONSERVATION REBATE	900.00
				ENERGY CONSERVATION REBATE	1,372.45
				ENERGY CONSERVATION REBATE	2,100.00
				ENERGY CONSERVATION REBATE	1,300.00
				ENERGY CONSERVATION REBATE	1,300.00
				ENERGY CONSERVATION REBATE	254.08
Total for Check/Tran - 127574:					69,619.21
127575 11/18/21	CHK	10098	GRAINGER	TWO STAGE AIR COMPRESSOR	1,468.37
127576 11/18/21	CHK	10104	HADLOCK BUILDING SUPPLY, INC.	TRTMNT PLANT - MATERIALS	44.60
				TRTMNT PLANT - MATERIALS	30.83
Total for Check/Tran - 127576:					75.43
127577 11/18/21	CHK	10384	HDR ENGINEERING INC	TASK10-CHIMACUM CREEK WTRLN 9/26-10/23	709.92
127578 11/18/21	CHK	10128	JEFFERSON COUNTY TREASURER	OCTOBER 2021 B&O TAX	110,826.22

12/08/2021 12:16:02 PM

Accounts Payable Check Register

Page 10

11/09/2021 To 11/28/2021

Bank Account: 1 - 1ST SECURITY - AP

Check / Tran Date	Pmt Type	Vendor	Vendor Name	Reference	Amount
127579 11/18/21	CHK	10129	JIIFY LUBE	VEH# 205 - OIL CHANGE	68.60
				VEH# 206 - OIL CHANGE	76.94
Total for Check/Tran - 127579:					145.54
127580 11/18/21	CHK	10348	KEMP WEST, INC	TREE TRIMMING FOR TRANS LINES THRU 7/08	9,480.00
127581 11/18/21	CHK	10286	L & J ENTERPRISES	RESTORE AREA - 5710 JACKMAN ST	1,228.47
				CLEAN UP FOR FIBER - SUNSET & MOON LAKE	675.63
Total for Check/Tran - 127581:					1,904.10
127582 11/18/21	CHK	10896	MOON LAKE ELECTRIC ASSN.,INC	METER 2S-CL200-USED METER	3,927.60
				METER 2S-CL200-USED METER	-327.60
Total for Check/Tran - 127582:					3,600.00
127583 11/18/21	CHK	10771	MOUNTAIN STATES PIPE & SUPPLY CO	WATER METERS	7,933.74
127584 11/18/21	CHK	10163	NOR'WEST CUSTODIAL SERVICES, INC.	CUSTODIAL SVC - OCT 2021	1,554.00
				CUSTODIAL SVC - OCT 2021	388.50
Total for Check/Tran - 127584:					1,942.50
127585 11/18/21	CHK	10161	NORTHWEST LINEMAN COLLEGE	VIRTUAL RIGGING COURSE	6,069.00
127586 11/18/21	CHK	10322	NRC ENVIRONMENTAL SERVICES, INC	SAMPLE&CLEAN - 310 FOUR CRNRS	1,162.23
127587 11/18/21	CHK	10167	OFFICE DEPOT	WATER - OFFICE SUPPLIES	10.46
				WATER - OFFICE SUPPLIES	2.62
				OPERATIONS - OFFICE SUPPLIES	211.59
				OPERATIONS - OFFICE SUPPLIES	52.90
Total for Check/Tran - 127587:					277.57
127588 11/18/21	CHK	10170	OLYMPIC EQUIPMENT RENTALS	BAR EXTENSION	23.09
				EXCAVATOR RNTL&DELV-MULTIPLE WRK ORDERS	289.64
				MARKING WAND	78.53
				EMRGY REPAIR-1763 OAKBAY EXCV RNTL&DELV	240.02
				EMRNCYREPAIR-440CLEVELAND EXCV RNTL&DELV	247.81
Total for Check/Tran - 127588:					879.09

12/08/2021 12:16:02 PM

Accounts Payable Check Register

Page 11

11/09/2021 To 11/28/2021

Bank Account: 1 - 1ST SECURITY - AP

Check / Tran Date	Pmt Type	Vendor	Vendor Name	Reference	Amount
127589 11/18/21	CHK	10171	ON LINE INFORMATION SERVICES	ONLINE UTILITY EXG REPORT - OCT 2021	232.00
127590 11/18/21	CHK	10175	PACIFIC UNDERWRITERS CORP	LIFE - DEC 2021	94.95
				LTD - DEC 2021	1,786.86
Total for Check/Tran - 127590:					1,881.81
127591 11/18/21	CHK	10181	PENINSULA PEST CONTROL	QRTLY GP SRVC 310 FOUR CRNRS NOV 21	78.55
				QRTLY GP SRVC 310 FOUR CRNRS NOV 21	19.64
				RODENT SVC MO 210 FOUR CRNRS NOV 2021	61.10
				RODENT SVC MO 210 FOUR CRNRS NOV 2021	15.27
				RODENT SVC MO 310 FOUR CRNRS NOV 2021	65.46
				RODENT SVC MO 310 FOUR CRNRS NOV 2021	16.37
Total for Check/Tran - 127591:					256.39
127592 11/18/21	CHK	10198	PROGLASS, INC	FIBERGLASS BASEMENT&GROUND SLEEVE	16,080.82
127593 11/18/21	CHK	10708	RCE TRAFFIC CONTROL, INC	FLAGGING - 892 19TH ST 10/22	967.50
				FLAGGING - 5473 CAPE GEORGE RD	769.50
				FLAGGING - 651 CLEVELAND ST. 10/28	1,247.00
Total for Check/Tran - 127593:					2,984.00
127594 11/18/21	CHK	10249	SPECTRA LABORATORIES-KITSAP LLC	TESTING:HERBICIDE BYWATER	203.00
				TESTING:PESTICIDE BYWATER	467.00
Total for Check/Tran - 127594:					670.00
127595 11/18/21	CHK	10234	STATE AUDITORS	CPA REVIEW OCT 2021	1,809.00
				CPA REVIEW SEP 2021	361.92
				CPA REVIEW OCT 2021	453.00
				CPA REVIEW SEP 2021	90.48
Total for Check/Tran - 127595:					2,714.40
127596 11/18/21	CHK	10496	WELLS FARGO VENDOR FIN SERV	4 CRNRS COPYRNT NOV 21	226.93
				4 CRNRS COPYRNT NOV 21	56.73
				4CRNRS COPYRNT NOV 21	315.09
				4CRNRS COPYRNT NOV 21	78.77

12/08/2021 12:16:02 PM

Accounts Payable Check Register

Page 12

11/09/2021 To 11/28/2021

Bank Account: 1 - 1ST SECURITY - AP

Check / Tran Date	Pmt Type	Vendor	Vendor Name	Reference	Amount
Total for Check/Tran - 127596:					677.52
127597 11/24/21	CHK	10012	ALTEC INDUSTRIES, INC	VEH# 130 - ROUTINE MAINTENANCE	2,358.29
				VEH# 101 - PREVENTIVE MAINTENANCE	877.31
				VEH# 123 - ROUTINE MAINTENANCE	1,343.98
Total for Check/Tran - 127597:					4,579.58
127598 11/24/21	CHK	10016	ASPLUNDH TREE EXPERT CO	TREE TRIMMING	5,714.25
127599 11/24/21	CHK	10688	MIKE BAILEY	NRECA:MNGMNT TRAINING NOV-21 TRVL EXP	590.40
				NRECA:MNGMNT TRAINING NOV-21 TRVL EXP	147.60
Total for Check/Tran - 127599:					738.00
127600 11/24/21	CHK	10838	ZACHARY BARBIETO	WELLNESS PROGRAM REIMBURSEMENT	95.00
127601 11/24/21	CHK	10036	CARL'S BUILDING SUPPLY, INC	N. BECKETT PT. - HEAVY METAL POST	114.56
127602 11/24/21	CHK	10041	CDW GOVERNMENT	ADOBE ACROBAT PRO DC FOR TEAMS	2,732.30
				ADOBE CREATIVE CLOUD FOR TEAMS	925.92
				ADOBE PHOTOSHOP CC FOR TEAMS	786.72
Total for Check/Tran - 127602:					4,444.94
127603 11/24/21	CHK	10043	CENTRAL WELDING SUPPLY		100.53
127604 11/24/21	CHK	10050	CHS	COYLE - GENERATOR FUEL	28.43
127605 11/24/21	CHK	10055	CONSOLIDATED ELECTRICAL DISTRIB	COUPLING	128.26
127606 11/24/21	CHK	10501	D & L POLES	310 4 CRNRS - VAC OUT STORM DRAINS	4,394.11
				310 4 CRNRS - VAC OUT STORM DRAINS	1,098.53
				WSDOT BRDG PROJECT - REPAIR CONDUITS	2,100.18
Total for Check/Tran - 127606:					7,592.82
127607 11/24/21	CHK	10815	DANIEL ANDERSON TRUCKING&EXCA	310 4CRNRS-DIRT WRK INSTALL GRAV STORAGE	12,065.43
				310 4CRNRS-DIRT WRK INSTALL GRAV STORAGE	3,016.35
Total for Check/Tran - 127607:					15,081.78
127608 11/24/21	CHK	10551	DAY WIRELESS SYSTEMS	MOBILE RADIOS - DEC 2021	986.05

12/08/2021 12:16:02 PM

Accounts Payable Check Register

Page 13

11/09/2021 To 11/28/2021

Bank Account: 1 - 1ST SECURITY - AP

Check / Tran Date	Pmt Type	Vendor	Vendor Name	Reference	Amount
127609 11/24/21	CHK	10780	DELL BUSINESS CREDIT	PRECISION 3560 WORKSTATION	2,026.76
				PRECISION 3560 WORKSTATION	506.69
				DELL PRECISION 3560 WRKSTIN LAPTOP RITA	1,930.64
				DELL PRECISION 3560 WRKSTIN LAPTOP RITA	482.66
Total for Check/Tran - 127609:					4,946.75
127610 11/24/21	CHK	10372	EVERGREEN COLLISION CENTER-SEQU	VEH# 128 - REPAIR FENDER	2,994.96
127611 11/24/21	CHK	10085	FASTENAL	ELEC TAPE,MRKNG PAINT,CAUT TAPE	142.31
				BATTERIES	0.80
				SFTY GLS & GLOVES	14.71
				BATTERIES	0.20
Total for Check/Tran - 127611:					158.02
127612 11/24/21	CHK	10094	GENERAL PACIFIC, INC	TEST SWITCH 10 POINT WITH COVER	2,870.20
				METER RINGS	231.29
Total for Check/Tran - 127612:					3,101.49
127613 11/24/21	CHK	10454	GLOBAL RENTAL COMPANY INC	AA55 DBLMN BUCKET VEH#414 11/10-12/07	3,719.60
				AT40-G BUCKETRNTL VEH#416 11/10-12/07	2,953.80
				VEH# 415-AT40G BKT RENTAL 11/3-11/30/21	2,943.00
Total for Check/Tran - 127613:					9,616.40
127614 11/24/21	CHK	10104	HADLOCK BUILDING SUPPLY, INC.	STOCK - TEFLON PASTE & EDGE BLADE	9.80
127615 11/24/21	CHK	10839	IRBY ELECTRICAL UTILITES	GUY STRANDVISE	471.86
				MULE TAPE	2,345.65
				POLE EYE PLATE GUY	310.93
				DEADEND SHOE	490.95
Total for Check/Tran - 127615:					3,619.39
127616 11/24/21	CHK	10281	JEFFCO EFTPS	EMPLOYEES' MEDICARE TAX	4,462.69
				EMPLOYER'S MEDICARE TAX	4,354.95
				EMPLOYEES' FICA TAX	11,558.11
				EMPLOYER'S FICA TAX	11,558.11

Page 15

Bank Account: 1 - 1ST SECURITY - AP

[illegible]

12/08/2021 12:16:02 PM

Accounts Payable Check Register

Page 16

11/09/2021 To 11/28/2021

Bank Account: 1 - 1ST SECURITY - AP

Check / Tran Date	Pmt Type	Vendor	Vendor Name	Reference	Amount
				WTR-A&B UTLTPRMT 11/19/2020-10/06/2021	54.00
				WTR-A&B UTLTPRMT 11/19/2020-10/06/2021	54.00
				WTR-A&B UTLTPRMT 11/19/2020-10/06/2021	54.00
				WTR-A&B UTLTPRMT 11/19/2020-10/06/2021	270.00
				WTR-A&B UTLTPRMT 11/19/2020-10/06/2021	270.00
				WTR-A&B UTLTPRMT 11/19/2020-10/06/2021	270.00
				WTR-A&B UTLTPRMT 11/19/2020-10/06/2021	270.00
				WTR-A&B UTLTPRMT 11/19/2020-10/06/2021	270.00
				WTR-A&B UTLTPRMT 11/19/2020-10/06/2021	270.00
				WTR-A&B UTLTPRMT 11/19/2020-10/06/2021	270.00
				WTR-A&B UTLTPRMT 11/19/2020-10/06/2021	270.00
				WTR-A&B UTLTPRMT 11/19/2020-10/06/2021	270.00
				WTR-A&B UTLTPRMT 11/19/2020-10/06/2021	270.00
				Total for Check/Tran - 127617:	10,746.00
127618 11/24/21	CHK	10532	JEFFERSON COUNTY PUD PAYROLL ACPR 11.26.2021-DIRECT DEPOSIT CHECKS		192,058.30
			PR 11.26.2021-MANUAL CHECKS		9,279.95
			Total for Check/Tran - 127618:		201,338.25
127619 11/24/21	CHK	10129	JEFFY LUBE	VEH# 131 - OIL CHANGE	85.28
127620 11/24/21	CHK	10330	KARR TUTTLE CAMPBELL	PROFESSION SVC: OCT 2021	3,844.80
				PROFESSION SVC: OCT 2021	961.20
			Total for Check/Tran - 127620:		4,806.00
127621 11/24/21	CHK	9999	NICHOLAS KELBON	REFUND-SCOPE OF WORK CHANGE WO#121147	11,945.00
127622 11/24/21	CHK	10348	KEMP WEST, INC	TT T&M-VARIOUS AREAS 10/18-10/21/21	12,653.28
				TT T&M-VARIOUS AREAS 10/25-10/28/21	13,663.06
				TT T&M-SIMS WAY PT 11/2-11/4/21	9,489.96
			Total for Check/Tran - 127622:		35,806.30
127623 11/24/21	CHK	10141	MARSH USA INC	POLE ATTACH BOND 1YR	100.00
127624 11/24/21	CHK	10777	BARUCH A MCKNIGHT	WELLNESS HOLIDAY BAG 2021	50.37

12/08/2021 12:16:02 PM

Accounts Payable Check Register

Page 17

11/09/2021 To 11/28/2021

Bank Account: 1 - 1ST SECURITY - AP

Check / Tran Date	Pmt Type	Vendor	Vendor Name	Reference	Amount
				WELLNESS HOLIDAY BAG 2021	12.59
				Total for Check/Tran - 127624:	62.96
127625 11/24/21	CHK	10309	NISC	PRINT SVCS INVOICE OCT 2021	2,174.52
				PRINT SVCS INVOICE OCT 2021	6,293.83
				PRINT SVCS INVOICE OCT 2021	1,307.91
				PRINT SVCS INVOICE OCT 2021	543.62
				PRINT SVCS INVOICE OCT 2021	1,573.46
				PRINT SVCS INVOICE OCT 2021	326.97
				MISC OCT 2021	180.00
				MISC OCT 2021	543.28
				MISC OCT 2021	45.00
				MISC OCT 2021	135.82
				RECURRING INVOICE OCT 2021	1,102.39
				RECURRING INVOICE OCT 2021	229.34
				RECURRING INVOICE OCT 2021	1,816.02
				RECURRING INVOICE OCT 2021	497.80
				RECURRING INVOICE OCT 2021	497.80
				RECURRING INVOICE OCT 2021	9,143.23
				RECURRING INVOICE OCT 2021	939.77
				RECURRING INVOICE OCT 2021	103.20
				RECURRING INVOICE OCT 2021	1,595.87
				RECURRING INVOICE OCT 2021	336.60
				RECURRING INVOICE OCT 2021	22.93
				Total for Check/Tran - 127625:	29,409.36
127626 11/24/21	CHK	10166	NWPPA	NWPPA-COMM DIFF CIRCUL ALL PUD 11/9/21	2,200.00
				NWPPA-COMM DIFF CIRCUL ALL PUD 11/9/21	550.00
				NWPPA-IMPROVE WEBSITE USER TRNG 10/14/21	156.00
				NWPPA-IMPROVE WEBSITE USER TRNG 10/14/21	39.00
				Total for Check/Tran - 127626:	2,945.00

12/08/2021 12:16:02 PM

Accounts Payable Check Register

Page 18

11/09/2021 To 11/28/2021

Bank Account: 1 - 1ST SECURITY - AP

Check / Tran Date	Pmt Type	Vendor	Vendor Name	Reference	Amount
127627 11/24/21	CHK	10865	OLYMPIC ELECTRIC CO, INC	PT - FIBER INSTALL 10/11-10/14/21	8,464.60
				PT - FIBER INSTALL 10/11-10/14/21	2,539.74
Total for Check/Tran - 127627:					11,004.34
127628 11/24/21	CHK	10549	PENINSULA LEGAL SECRETARIAL SER	TRANSCRIPTION SVC 11/5-11/8/21	427.00
				TRANSCRIPTION SVC 11/5-11/8/21	106.75
Total for Check/Tran - 127628:					533.75
127629 11/24/21	CHK	10187	PITNEY BOWES-RESERVE ACCT	PRE-PAID POSTAGE 11/18/2021	320.00
				PRE-PAID POSTAGE 11/18/2021	80.00
Total for Check/Tran - 127629:					400.00
127630 11/24/21	CHK	10197	PRINTERY COMMUNICATIONS	2021 PAST DUE BILLS POSTCARD	461.67
127631 11/24/21	CHK	10201	PUBLIC POWER COUNCIL	2021 SPECIAL DUES ASSESSMENT	1,699.20
				2021 SPECIAL DUES ASSESSMENT	424.80
Total for Check/Tran - 127631:					2,124.00
127632 11/24/21	CHK	10210	RICOH USA, INC	310 4CRNRS (0626) IMAGES SEP 2021	39.77
				310 4CRNRS (0626) IMAGES SEP 2021	9.94
				310 4CRNRS (0626) IMAGES OCT 2021	410.28
				310 4CRNRS (0626) IMAGES OCT 2021	102.57
Total for Check/Tran - 127632:					562.56
127633 11/24/21	CHK	10869	RITZ SAFETY LLC	FR CLOTHING	126.22
				FR CLOTHING	157.30
Total for Check/Tran - 127633:					283.52
127634 11/24/21	CHK	10706	SBA STRUCTURES, LLC	TOWER SITE RNTL MAYNARD HILL- DEC 2021	1,642.28
127635 11/24/21	CHK	10216	SECURITY SERVICES NW, INC.	NIGHT PAYMENT PICKUP - NOV 2021	1,189.24
				NIGHT PAYMENT PICKUP - NOV 2021	297.31
Total for Check/Tran - 127635:					1,486.55
127636 11/24/21	CHK	9998	JOHN SENK	Credit Balance Refund	95.55
127637 11/24/21	CHK	10421	THE CARWASH INC	VEH#300-FLEET SERVICE OCT 2021	12.26

12/08/2021 12:16:02 PM

Accounts Payable Check Register

Page 19

11/09/2021 To 11/28/2021

Bank Account: 1 - 1ST SECURITY - AP

Check / Tran Date	Pmt Type	Vendor	Vendor Name	Reference	Amount
				VEH#210-FLEET SERVICE OCT 2021	24.53
				VEH#211-FLEET SERVICE OCT 2021	12.26
				Total for Check/Tran - 127637:	49.05
127638 11/24/21	CHK	10221	THE STATION SIGNS & SCREEN PRINTI	VEH# 128 - LOGO & NUMBER	81.83
				VEH# 415 - LOGO & VEH NUMBER	190.93
				Total for Check/Tran - 127638:	272.76
127639 11/24/21	CHK	10251	UGN - JEFFERSON COUNTY	UNITED GOOD NEIGHBORS EE	15.00
127640 11/24/21	CHK	10260	WA STATE DEFERRED COMPENSATION	CORRECT AMOUNT DUE FOR 11.26 PAYROLL	-664.82
				PL DEFERRED COMP EE	14,599.53
				PL DEFERRED COMP ER	7,079.51
				Total for Check/Tran - 127640:	21,014.22
127641 11/24/21	CHK	10267	WA STATE SUPPORT REGISTRY	PL CHILD SUPPORT EE	165.50
127642 11/24/21	CHK	10647	WEST HILLS FORD MAZDA	VEH# 209-TROUBLE SHOOT CHECK ENGINE LT	-352.97
				VEH# 209 - TROUBLE SHOOT CHECK ENGINE LT	4,274.87
				Total for Check/Tran - 127642:	3,921.90
127643 11/24/21	CHK	10274	WESTBAY AUTO PARTS, INC.	THREAD SEALANT	8.36
127644 11/24/21	CHK	10278	WPUDA	MONTHLY DUES - NOV 2021	4,612.80
				MONTHLY DUES - NOV 2021	1,153.20
				2021 ANNUAL CONFERENCE REGISTRATION	80.00
				2021 ANNUAL CONFERENCE REGISTRATION	20.00
				2021 ANNUAL CONF REGISTRATION	80.00
				2021 ANNUAL CONF REGISTRATION	20.00
				2021 ANNUAL CONFERENCES REGISTRATION	80.00
				2021 ANNUAL CONFERENCES REGISTRATION	20.00
				Total for Check/Tran - 127644:	6,066.00

Total Payments for Bank Account - 1 : (133) 1,253,253.82

12/08/2021 12:16:02 PM

Accounts Payable Check Register

Page 20

11/09/2021 To 11/28/2021

Bank Account: 1 - 1ST SECURITY - AP

Check / Tran Date	Pmt Type	Vendor	Vendor Name	Reference	Amount	
					Total Voids for Bank Account - 1 :	(0) 0.00
					Total for Bank Account - 1 :	(133) 1,253,253.82
					Grand Total for Payments :	(133) 1,253,253.82
					Grand Total for Voids :	(0) 0.00
					Grand Total :	(133) 1,253,253.82

12/08/2021 12:16:34 PM

Accounts Payable Check Register

Page 1

11/30/2021 To 12/06/2021

Bank Account: 1 - 1ST SECURITY - AP

Check / Tran Date	Pmt Type	Vendor	Vendor Name	Reference	Amount
127742 12/2/21	CHK	10006	AFLAC	AFLAC BILL NOV 2021	60.48
				AFLAC BILL NOV 2021	26.40
				AFLAC BILL NOV 2021	138.36
Total for Check/Tran - 127742:					225.24
127743 12/2/21	CHK	10447	ANIXTER INC.	OVERHEAD SWITCH MOUNTS-18'	2,077.79
				DROP FIBER	1,309.20
Total for Check/Tran - 127743:					3,386.99
127744 12/2/21	CHK	10838	ZACHARY BARBIETO	OIL CHANGE FOR VEH 120	74.16
127745 12/2/21	CHK	10027	BERNT ERICSEN EXCAVATING, INC	PORT OF PT - TRENCHING FOR FBR CONDUITS	37,968.92
				DUMP TRUCK - 2302 35TH ST	2,400.20
				EXCAVATING - 8012 HWY 20	2,182.00
				INSTL FBR VAULT&SWEEP TO POLE-NESS CRNR	8,408.88
Total for Check/Tran - 127745:					50,960.00
127746 12/2/21	CHK	10889	JESSE E BLAND	GAS FOR VEH #119	36.00
127747 12/2/21	CHK	10295	DYLAN C BRACKNEY	CDL PHYSICAL - LINECREW	120.00
127748 12/2/21	CHK	10038	CASCADE COLUMBIA DISTRIBUTION C	CAUSTIC SODA 50% NSF QTY 15	6,205.34
127749 12/2/21	CHK	10843	CCG CONSULTING	FIBER POLICY & PROCEDURE OCT 2021	10,045.56
127750 12/2/21	CHK	10045	CENTURY LINK-S	PHONE SERVICE - NOV 2021	66.06
				PHONE SERVICE - NOV 2021	16.52
				PHONE SERVICE - NOV 2021	31.17
				PHONE SERVICE - NOV 2021	7.79
Total for Check/Tran - 127750:					121.54
127751 12/2/21	CHK	10050	CHS	COYLE WELL- PROPANE FOR GENERATOR	655.26
127752 12/2/21	CHK	10059	DAILY JOURNAL OF COMMERCE	METERSYS UPGRADE INVITE BID11/5&11/12/21	193.50
127753 12/2/21	CHK	10365	ALYSON J DEAN	NWPPA-E&O CONF COMT MTNG 11/17-11/18	227.04

12/08/2021 12:16:34 PM

Accounts Payable Check Register

Page 2

11/30/2021 To 12/06/2021

Bank Account: 1 - 1ST SECURITY - AP

Check / Tran Date	Pmt Type	Vendor	Vendor Name	Reference	Amount
127754 12/2/21	CHK	10747	DESIGNER DECAL, INC.	CAUTION FIBER OPTIC CABLE TAG	1,041.04
127755 12/2/21	CHK	9999	RON & LESLIE DIIMMEL	REFUND - SCOPE OF WORK CHANGE WO#20492	656.00
127756 12/2/21	CHK	10078	ESCI	ACCIDENT INVESTIGATION AND REPORT	2,341.23
127757 12/2/21	CHK	10802	THERESA L GIESE	DAILY MAIL OFFICE RUN NOV 2021	45.84
				DAILY MAIL OFFICE RUN NOV 2021	11.46
				DAILY MAIL OFFICE RUN OCT 2021	39.79
				DAILY MAIL OFFICE RUN OCT 2021	9.95
Total for Check/Tran - 127757:					107.04
127758 12/2/21	CHK	10454	GLOBAL RENTAL COMPANY INC	A77-TE93 VEH#420 TRK RNTL 10/24-11/20/21	10,355.00
				VEH#420 TRK RNTL CREDIT 11/3-11/20/21	-6,681.21
				A77-TE93 VEH#420 TRK RNTL PICKUP FEE	752.79
				AT37-G BUCKETRNTL VEH#410 11/06-12/03/21	2,725.00
Total for Check/Tran - 127758:					7,151.58
127759 12/2/21	CHK	10103	H D FOWLER	SADDLE BODY,SADDLE RANGE,METER BOX CVR	5,578.10
127760 12/2/21	CHK	10104	HADLOCK BUILDING SUPPLY, INC.	WELL HOUSES - MOSS OUT	107.97
				SHOP-MOSS OUT FOR ROOFS	56.71
Total for Check/Tran - 127760:					164.68
127761 12/2/21	CHK	9998	CATHERINE HENDY	Credit Balance Refund	1,300.00
127762 12/2/21	CHK	10110	HENERY HARDWARE	TREATMENT PLANT - FCT CNTR, ADPT & BUSH	31.60
127763 12/2/21	CHK	10518	J HARLEN COMPANY	SOCKET SET	234.75
127764 12/2/21	CHK	10118	JCI JONES CHEMICALS, INC.	BULK CHLORINE	2,164.68
127765 12/2/21	CHK	10129	JIFFY LUBE	VEH# 119 - OIL CHANGE	98.27
127766 12/2/21	CHK	10142	MASON COUNTY PUD #1	DOSEWALLIPS RD-PUMP ELEC - NOV 21	175.93
				BPA RD-PUMP ELEC - NOV 21	111.52
				WILLIAMS CT ELEC - NOV 21	41.52

12/08/2021 12:16:34 PM

Accounts Payable Check Register

Page 3

11/30/2021 To 12/06/2021

Bank Account: 1 - 1ST SECURITY - AP

Check / Tran Date	Pmt Type	Vendor	Vendor Name	Reference	Amount
Total for Check/Tran - 127766:					328.97
127767 12/2/21	CHK	10181	PENINSULA PEST CONTROL	GEN PEST SVC BI-ANNUAL KALA	38.19
127768 12/2/21	CHK	10185	PITNEY BOWES GLOBAL	MAILSYSTEM LEASE Q4 2021	121.07
				MAILSYSTEM LEASE Q4 2021	30.27
Total for Check/Tran - 127768:					151.34
127769 12/2/21	CHK	10565	JIMMY R SCARBOROUGH	NWPPA E&O CONF 11/17-11/18 EXPS	277.04
127770 12/2/21	CHK	10214	SEL SCHWEITZER ENGINEERING LABS	RECLOSER CORD	1,150.35
127771 12/2/21	CHK	10217	SETON CONSTRUCTION INC	SWANSONVILLE - FLAGGING	1,374.62
127772 12/2/21	CHK	10249	SPECTRA LABORATORIES-KITSAP LLC	TESTING: VOC PORT OF PT 10/27/21	200.00
				TESTING:COLI/E.COLI MO QUIMPER 11/10/21	23.00
				TESTING:COLI/E.COLI MO QUIMPER 11/10/21	23.00
				TESTING:COLI/E.COLI MO QUIMPER 11/10/21	23.00
				TESTING:COLI/E.COLI MO QUIMPER 11/10/21	23.00
				TESTING:COLI/E.COLI MO QUIMPER 11/10/21	23.00
				TESTING: COLI/ECOLI BYWATER MO 11/10/21	23.00
				TESTING: COLI/ECOLI QUIMPER MO 11/10/21	23.00
				TESTING: COLI/ECOLI QUIMPER MO 11/10/21	23.00
				TESTING: COLI/ECOLI QUIMPER MO 11/10/21	23.00
				TESTING: COLI/ECOLI QUIMPER MO 11/10/21	23.00
				TESTING: COLI/ECOLI QUIMPER MO 11/10/21	23.00
				TESTING:COLI/ECOLI MO 11/17/21	23.00
				TESTING: COLI/ECOLI MO 11/17/21	23.00
				TESTING: COLI/ECOLI MO 11/17/21	23.00
				TESTING: COLI/ECOLI MO 11/17/21	23.00
				TESTING: COLI/ECOLI MO 11/17/21	23.00
				TESTING:GRS ALPHA&RADIUM TRITON COVE	280.00
Total for Check/Tran - 127772:					848.00
127773 12/2/21	CHK	10727	TITAN ELECTRIC, INC	HDPE/VAULT-WSDOT N TRIBUTARY# 221033	71,986.41

12/08/2021 12:16:34 PM

Accounts Payable Check Register

Page 4

11/30/2021 To 12/06/2021

Bank Account: 1 - 1ST SECURITY - AP

Check / Tran Date	Pmt Type	Vendor	Vendor Name	Reference	Amount
127774 12/2/21	CHK	10252	ULINE	STORAGE BINS	59.27
				CHEMICAL RESISTANT GLOVES	436.57
				GOGGLES	45.90
				TYVEK COVERALL	191.43
Total for Check/Tran - 127774:					733.17
127775 12/2/21	CHK	10620	UPS	SHIPPING FEE - OIL TESTING	15.78
127776 12/2/21	CHK	10615	US BANK	SUBSTATION-PERMASLEEVE TAPE	726.49
				210 4 CRNRS-REPLACEMENT AED PADS	102.00
				VEH#103&106-REPLACEMENT AED PADS	204.00
				SPARLING-REPLACEMENT AED PADS	102.00
				WATERWORKS RENWL 2022 1YR	84.00
				BILLING-OFFICE 365 MNTHLY SUBSCRIPTION	83.79
				PHONE SERVICE	200.00
				SCADA ALERTS	9.15
				WEB HOSTING SERVICE	2.78
				WEBSITE EMAIL SERVICE	12.00
				BILLING-OFFICE 365 MNTHLY SUBSCRIPTION	20.95
				PHONE SERVICE	50.00
				SCADA ALERTS	2.29
				WEB HOSTING SERVICE	0.70
				WEBSITE EMAIL SERVICE	3.00
				DESKTOP MNGMT SOFTWARE	26.18
				EMAIL SERVER SOFTWARE	214.71
				PHONE CHARGERS	22.67
				DESKTOP MNGMT SOFTWARE	6.54
				EMAIL SERVER SOFTWARE	53.68
				PHONE CHARGERS	5.67
				MIP TRNGN TRVL EXP 11/06-11/07/21	243.09
				MIP TRNGN TRVL EXP 11/06-11/07/21	60.77

12/08/2021 12:16:34 PM

Accounts Payable Check Register

Page 5

11/30/2021 To 12/06/2021

Bank Account: 1 - 1ST SECURITY - AP

Check / Tran Date	Pmt Type	Vendor	Vendor Name	Reference	Amount
				GRANT MNGMNT TRNG REG FEE 11/15-11/17/21	719.20
				SUPERVISORY ROLE TRNG REG FEE 2/1-3/2/22	504.00
				GRANT MNGMNT TRNG REG FEE 11/15-11/17/21	179.80
				SUPERVISORY ROLE TRNG REG FEE 2/1-3/2/22	126.00
				CSR RECRUITMENT COST	6.70
				CSR RECRUITMENT COST	172.00
				HR DEVELOPMENT TRNG REG FEE	276.00
				PREEMPLY BACKGROUND CHECK	68.00
				CSR RECRUITMENT COST	1.67
				CSR RECRUITMENT COST	43.00
				HR DEVELOPMENT TRNG REG FEE	69.00
				PREEMPLY BACKGROUND CHECK	17.00
				VA TROJEN RD PROJ - REGISTER OF EASEMENT	211.67
				WEBSITE IMAGES	26.18
				WEBSITE IMAGES	6.54
				Total for Check/Tran - 127776:	4,663.22
127777 12/2/21	CHK	10569	WAYNE D. ENTERPRISES, INC.	RAIN GEAR-HYDROLITE STORM JACKET&BIB	-92.39
				RAIN BIB	436.34
				RAIN JACKET	671.35
				Total for Check/Tran - 127777:	1,015.30
127778 12/2/21	CHK	9998	B G WHITE	Credit Balance Refund	239.69
127779 12/2/21	CHK	10858	ZOOM VIDEO COMMUNICATIONS, INC.	VID CONF SVC 11/22-12/21/21	327.21
				VID CONF SVC 11/22-12/21/21	81.80
				Total for Check/Tran - 127779:	409.01

Total Payments for Bank Account - 1 : (38) 176,350.69

Total Voids for Bank Account - 1 : (0) 0.00

Total for Bank Account - 1 : (38) 176,350.69

12/08/2021 12:16:34 PM

Accounts Payable
Check Register

Page 6

Grand Total for Payments :	(38)	176,350.69
Grand Total for Voids :	(0)	0.00
Grand Total :	(38)	176,350.69

12/08/2021 10:27:26 AM

Accounts Payable Check Register

Page 1

11/09/2021 To 12/06/2021

Bank Account: 1 - 1ST SECURITY - AP

Check / Tran Date	Pmt Type	Vendor	Vendor Name	Reference	Amount
157 11/12/21	WIRE	10279	BPA-WIRE TRANSFER	PURCHASED POWER SEP 2021	1,077,757.00
				TRANSMISSION SEP 2021	107,519.00
				REGIONAL COMP ENFOR SEP 2021	1,254.00
				REGIONAL COORD SVC SEP 2021	1,003.00
Total for Check/Tran - 157:					1,187,533.00
158 12/1/21	WIRE	10809	PETERSON LAKE - WIRE PAYMENT	PETERSON LAKE WIRE PMT DEC 2021	3,273.36 VOID
				PETERSON LAKE WIRE PMT DEC 2021	11,055.27 VOID
Total for Check/Tran - 158:					14,328.63 VOID
159 12/1/21	WIRE	10809	PETERSON LAKE - WIRE PAYMENT	PETERSON LAKE WIRE PMT DEC 2021	3,273.35
				PETERSON LAKE WIRE PMT DEC 2021	11,055.27
Total for Check/Tran - 159:					14,328.62

Total Payments for Bank Account - 1 :	(2)	1,201,861.62
Total Voids for Bank Account - 1 :	(1)	14,328.63
Total for Bank Account - 1 :	(3)	1,216,190.25
Grand Total for Payments :	(2)	1,201,861.62
Grand Total for Voids :	(1)	14,328.63
Grand Total :	(3)	1,216,190.25

JEFFERSON COUNTY PUD NO 1

ISSUED PAYROLL CHECKS
PAY DATE: 11/12/2021

Empl	Position	Check #	Check Date	Amount
2000	WATER DISTRIBUTION MANAGER II	70960	11/12/2021	2,027.35
3032	CUSTOMER SERVICE REP	70961	11/12/2021	1,254.82
2003	WATER TREATMENT PLANT OPERATOR III	70962	11/12/2021	2,521.03
2004	WATER TREATMENT PLANT OPERATOR III - LEAD	70963	11/12/2021	2,461.02
				\$ 8,264.22

JEFFERSON COUNTY PUD NO 1

ISSUED PAYROLL CHECKS
PAY DATE: 11/26/2021

Empl	Position	Check #	Check Date	Amount
2000	WATER DISTRIBUTION MANAGER II	70964	11/26/2021	1,795.96
3032	CUSTOMER SERVICE REP	70965	11/26/2021	1,254.82
2003	WATER TREATMENT PLANT OPERATOR III	70966	11/26/2021	2,109.59
2004	WATER TREATMENT PLANT OPERATOR III - LEAD	70967	11/26/2021	4,119.58
				\$ 9,279.95

JEFFERSON COUNTY PUD NO 1

DIRECT DEPOSIT PAYROLL PAY DATE: 11/12/2021
--

Empl	Position	Pay Date	Net Pay
3052	ADMINISTRATIVE ASSISTANT	11/12/2021	2,286.53
1044	APPRENTICE LINEMAN	11/12/2021	5,938.70
1026	BROADBAND COORDINATOR	11/12/2021	1,997.52
4006	COMMISSIONER DIST 1	11/12/2021	2,288.31
4004	COMMISSIONER DIST 2	11/12/2021	1,742.59
4008	COMMISSIONER DIST 3	11/12/2021	1,906.87
3034	COMMUNICATIONS DIRECTOR	11/12/2021	2,388.59
3002	CUSTOMER SERVICE COORDINATOR	11/12/2021	1,426.36
3014	CUSTOMER SERVICE PROGRAM SPECIALIST	11/12/2021	1,350.22
3022	CUSTOMER SERVICE REP	11/12/2021	1,368.81
3046	CUSTOMER SERVICE REP	11/12/2021	1,214.38
3048	CUSTOMER SERVICE REP	11/12/2021	1,338.80
1027	ELECTRICAL ENGINEERING MANAGER	11/12/2021	3,059.06
1041	ELECTRICAL SUPERINTENDENT	11/12/2021	4,118.63
2007	ENGINEERING DIRECTOR	11/12/2021	3,404.66
3005	EXECUTIVE ASSISTANT/PUBLIC RECORDS OFFICER	11/12/2021	2,223.49
3033	FINANCE DIRECTOR	11/12/2021	3,566.88
3029	FINANCE SERVICES MANAGER	11/12/2021	2,324.81
1046	FLEET/WAREHOUSE HELPER	11/12/2021	2,922.78
1008	FOREMAN LINEMAN	11/12/2021	1,902.61
1012	FOREMAN LINEMAN	11/12/2021	8,207.67
1011	GENERAL MANAGER	11/12/2021	5,352.37
1042	GIS SPECIALIST	11/12/2021	2,368.20
1017	HEAD STOREKEEPER	11/12/2021	2,571.71
3047	HUMAN RESOURCES DIRECTOR	11/12/2021	2,616.95
3008	INFORMATION TECHNOLOGY MANAGER	11/12/2021	3,258.61
3028	IT SUPPORT TECHNICIAN	11/12/2021	1,737.51
1000	LINEMAN	11/12/2021	8,610.55
1016	LINEMAN	11/12/2021	4,252.95
1020	LINEMAN	11/12/2021	4,149.96
1034	LINEMAN	11/12/2021	3,258.11
1043	METER READER	11/12/2021	1,910.12
1047	METER READER	11/12/2021	1,811.75
1037	OPERATIONS DIRECTOR	11/12/2021	3,611.06
1050	PRE-APPRENTICE	11/12/2021	1,881.28
1051	PRE-APPRENTICE	11/12/2021	2,294.69
3004	RESOURCE MANAGER	11/12/2021	2,526.17
1003	SCADA TECH APPRENTICE	11/12/2021	3,748.11
3020	SERVICES DIRECTOR	11/12/2021	2,597.02
1031	STAKING ENGINEER	11/12/2021	2,486.90
1049	STAKING ENGINEER	11/12/2021	1,723.82
1014	STOREKEEPER	11/12/2021	2,760.27
1015	SUBSTATION/METER FOREMAN	11/12/2021	5,539.18
1033	SUBSTATION/METERING TECH	11/12/2021	5,437.68
3013	UTILITY ACCOUNTANT II	11/12/2021	1,624.83
3039	UTILITY ACCOUNTANT II	11/12/2021	1,493.82
3003	UTILITY BILLING CLERK	11/12/2021	1,479.11
3027	UTILITY BILLING CLERK	11/12/2021	1,537.83
3000	UTILITY BILLING COORDINATOR	11/12/2021	1,629.06
2001	WATER DISTRIBUTION MANAGER II	11/12/2021	2,162.44
2002	WATER DISTRIBUTION MANAGER II	11/12/2021	2,270.87
2005	WATER DISTRIBUTION MANAGER II	11/12/2021	2,186.72
			\$ 147,867.92

JEFFERSON COUNTY PUD NO 1

DIRECT DEPOSIT PAYROLL PAY DATE: 11/26/2021
--

Empl	Position	Pay Date	Net Pay
3052	ADMINISTRATIVE ASSISTANT	11/26/2021	2,286.52
1044	APPRENTICE LINEMAN	11/26/2021	5,972.50
1026	BROADBAND COORDINATOR	11/26/2021	2,229.44
4006	COMMISSIONER DIST 1	11/26/2021	950.76
4004	COMMISSIONER DIST 2	11/26/2021	965.26
4008	COMMISSIONER DIST 3	11/26/2021	1,906.86
3034	COMMUNICATIONS DIRECTOR	11/26/2021	3,679.08
3002	CUSTOMER SERVICE COORDINATOR	11/26/2021	1,497.44
3014	CUSTOMER SERVICE PROGRAM SPECIALIST	11/26/2021	1,350.22
3022	CUSTOMER SERVICE REP	11/26/2021	1,368.80
3046	CUSTOMER SERVICE REP	11/26/2021	1,214.37
3048	CUSTOMER SERVICE REP	11/26/2021	1,338.80
1027	ELECTRICAL ENGINEERING MANAGER	11/26/2021	3,604.40
1041	ELECTRICAL SUPERINTENDENT	11/26/2021	7,666.77
2007	ENGINEERING DIRECTOR	11/26/2021	3,404.67
3005	EXECUTIVE ASSISTANT/PUBLIC RECORDS OFFICER	11/26/2021	2,223.48
3033	FINANCE DIRECTOR	11/26/2021	4,175.40
3029	FINANCE SERVICES MANAGER	11/26/2021	2,324.81
1046	FLEET/WAREHOUSE HELPER	11/26/2021	4,211.12
1008	FOREMAN LINEMAN	11/26/2021	12,684.33
1012	FOREMAN LINEMAN	11/26/2021	7,452.01
1011	GENERAL MANAGER	11/26/2021	5,352.36
1042	GIS SPECIALIST	11/26/2021	2,368.21
1017	HEAD STOREKEEPER	11/26/2021	3,559.10
3047	HUMAN RESOURCES DIRECTOR	11/26/2021	2,965.82
3008	INFORMATION TECHNOLOGY MANAGER	11/26/2021	3,258.60
3028	IT SUPPORT TECHNICIAN	11/26/2021	1,737.50
1000	LINEMAN	11/26/2021	9,594.07
1016	LINEMAN	11/26/2021	7,483.14
1020	LINEMAN	11/26/2021	10,425.75
1034	LINEMAN	11/26/2021	3,414.69
1043	METER READER	11/26/2021	3,229.89
1047	METER READER	11/26/2021	2,716.76
1037	OPERATIONS DIRECTOR	11/26/2021	5,609.41
1050	PRE-APPRENTICE	11/26/2021	5,385.49
1051	PRE-APPRENTICE	11/26/2021	4,482.60
3004	RESOURCE MANAGER	11/26/2021	2,526.18
1003	SCADA TECH APPRENTICE	11/26/2021	4,403.37
3020	SERVICES DIRECTOR	11/26/2021	2,832.51
1031	STAKING ENGINEER	11/26/2021	2,486.92
1049	STAKING ENGINEER	11/26/2021	1,937.02
1014	STOREKEEPER	11/26/2021	4,970.24
1015	SUBSTATION/METER FOREMAN	11/26/2021	8,113.47
1033	SUBSTATION/METERING TECH	11/26/2021	6,722.07
3013	UTILITY ACCOUNTANT II	11/26/2021	1,624.83
3039	UTILITY ACCOUNTANT II	11/26/2021	1,680.58
3003	UTILITY BILLING CLERK	11/26/2021	1,516.76
3027	UTILITY BILLING CLERK	11/26/2021	1,537.82
3000	UTILITY BILLING COORDINATOR	11/26/2021	1,629.05
2001	WATER DISTRIBUTION MANAGER II	11/26/2021	2,162.43
2002	WATER DISTRIBUTION MANAGER II	11/26/2021	2,023.17
2005	WATER DISTRIBUTION MANAGER II	11/26/2021	1,801.45
			\$ 192,058.30

Jefferson County PUD No. 1
Electric Division
Statement of Operations
As of October 31, 2021

PART A. STATEMENT OF OPERATIONS				
ITEM	YEAR-TO-DATE			THIS MONTH
	LAST YEAR (a)	THIS YEAR (b)	BUDGET (c)	
1. Operating Revenue and Patronage Capital	30,292,459	31,227,934	30,237,206	2,659,131
2. Power Production Expense	0	0	0	0
3. Cost of Purchased Power	12,173,648	12,153,639	12,696,688	1,245,961
4. Transmission Expense	1,442,457	1,560,761	1,449,583	168,748
5. Regional Market Operations Expense	0	0	0	0
6. Distribution Expense - Operation	1,455,402	1,632,851	1,609,490	183,842
7. Distribution Expense - Maintenance	2,709,748	2,818,494	3,069,452	311,813
8. Consumer Accounts Expense	1,172,762	1,331,021	1,255,000	143,078
9. Customer Service and Informational Expense	15,971	25,359	23,680	1,783
10. Sales Expense	0	0	0	0
11. Administrative and General Expense	2,263,977	2,855,916	2,457,299	248,034
12. Total Operation & Maintenance Expense (2 thru 11)	21,233,965	22,378,041	22,561,192	2,303,259
13. Depreciation & Amortization Expense	4,571,401	4,613,224	4,753,660	462,709
14. Tax Expense - Property & Gross Receipts	0	0	0	0
15. Tax Expense - Other	1,746,836	1,807,581	2,137,197	153,570
16. Interest on Long-Term Debt	2,256,557	2,162,465	2,165,366	221,815
17. Interest Charged to Construction (Credit)	0	0	0	0
18. Interest Expense - Other	0	0	0	0
19. Other Deductions	39	0	78	0
20. Total Cost of Electric Service (12 thru 19)	29,808,798	30,961,311	31,617,493	3,141,353
21. Patronage Capital & Operating Margins (1 minus 20)	483,661	266,623	(1,380,287)	(482,222)
22. Non Operating Margins - Interest	45,806	4,529	72,315	2,825
23. Allowance for Funds Used During Construction	0	0	0	0
24. Income (Loss) from Equity Investments	0	0	0	0
25. Non Operating Margins - Other	1,677,833	1,845,914	2,283,040	284,948
26. Generation & Transmission Capital Credits	0	0	0	0
27. Other Capital Credits & Patronage Dividends	12,803	0	0	0
28. Extraordinary Items	0	0	0	0
29. Patronage Capital or Margins (21 thru 28)	2,220,103	2,117,066	975,068	(194,449)

Times Interest Earned Ratio (TIER) (Year to Date)	1.98	1.98	1.45
Operating Times Interest Earned Ratio (OTIER) (Year to Date)	1.21	1.12	0.36
Debt Service Coverage Ratio (DSC) (Year to Date)	1.83	1.79	1.59
Operating Debt Service Coverage Ratio (ODSC) (Year to Date)	1.48	1.41	1.11
Rolling 12 Month TIER	2.29	2.71	

Jefferson County PUD No. 1
Electric Division
Balance Sheet
October 31, 2021

PART B. BALANCE SHEET			
ASSETS AND OTHER DEBITS		LIABILITIES AND OTHER CREDITS	
1. Total Utility Plant in Service	180,844,989	29. Memberships	0
2. Construction Work in Progress	10,862,628	30. Patronage Capital	0
3. Total Utility Plant (1+2)	191,707,617	31. Operating Margins - Prior Years	0
4. Accum. Provision for Depreciation and Amort	71,151,038	32. Operating Margins - Current Year	266,622
5. Net Utility Plant (3-4)	120,556,579	33. Non-Operating Margins	1,850,443
6. Nonutility Property - Net	81,416	34. Other Margins & Equities	30,723,310
7. Investment in Subsidiary Companies	0	35. Total Margins & Equities (29 thru 34)	32,840,375
8. Invest. in Assoc. Org. - Patronage Capital	67,040	36. Long-Term Debt RUS (Net)	93,727,448
9. Invest. in Assoc. Org. - Other - General Funds	1,010	37. Long-Term Debt - Other (Net)	0
10. Invest in Assoc. Org. - Other - Nongeneral Funds	0	38. Total Long-Term Debt (36 + 37)	93,727,448
11. Investments in Economic Development Projects	0	39. Obligations Under Capital Leases - Non current	0
12. Other Investments	0	40. Accumulated Operating Provisions	1,517,089
13. Special Funds	94,250	41. Total Other Noncurrent Liabilities (39+40)	1,517,089
14. Total Other Property & Investments (6 thru 13)	243,716	42. Notes Payable	0
15. Cash-General Funds	923,428	43. Accounts Payable	3,387,252
16. Cash-Construction Funds-Trustee	0	44. Consumers Deposits	1,900
17. Special Deposits	0	45. Current Maturities Long-Term Debt	0
18. Temporary Investments	8,110,205	46. Current Maturities Long-Term Debt-Economic Dev.	0
19. Notes Receivable - Net	0	47. Current Maturities Capital Leases	0
20. Accounts Receivable - Net Sales of Energy	1,813,124	48. Other Current & Accrued Liabilities	1,932,183
21. Accounts Receivable - Net Other	(4,082,246)	49. Total Current & Accrued Liabilities (42 thru 48)	5,321,335
22. Renewable Energy Credits	0	50. Deferred Credits	425,539
23. Materials & Supplies - Electric and Other	3,159,853	51. Total Liabilities & Other Credits (35+38+41+49+50)	133,831,786
24. Prepayments	192,071		
25. Other Current & Accrued Assets	2,387,438	ESTIMATED CONTRIBUTION-IN-AID-OF-CONSTRUCTION	
26. Total Current & Accrued Assets (15 thru 25)	12,503,873	Balance Beginning of Year	0
27. Deferred Debits	527,618	Amounts Received This Year (Net)	1,185,492
28. Total Assets & Other Debits (5+14+26+27)	133,831,786	TOTAL Contributions-In-Aid-Of-Construction	1,185,492

Equity Ratio **24.54%**
 (Total Margins & Equities/Total Assets & Other Debits) x 100

Long-Term Debt to Total Plant Ratio **48.89%**
 (Long Term Debt/Total Utility Plant) x 100

Jefferson County PUD #1
Power Requirements
As of October 31, 2021

PART C. POWER REQUIREMENTS DATABASE				
CLASSIFICATION	CONSUMER, SALES, AND REVENUE DATA	OCTOBER CONSUMERS (b)	AVERAGE CONSUMERS (c)	Monthly KWH SALES AND REVENUE (d)
1. Residential Sales (excluding seasonal)	a. No. Consumers Served	17,856	17,780	
	b. KWH Sold			14,164,673
	c. Revenue			1,709,324
2. Residential Sales - Seasonal	a. No. Consumers Served	5	5	
	b. KWH Sold			0
	c. Revenue			0
3. Irrigation Sales	a. No. Consumers Served	2	2	
	b. KWH Sold			770
	c. Revenue			124
4. Comm. and Ind. 1000 KVA or Less	a. No. Consumers Served	2,421	2,412	
	b. KWH Sold			3,841,171
	c. Revenue			464,490
5. Comm. and Ind. Over 1000 KVA	a. No. Consumers Served	21	21	
	b. KWH Sold			8,286,971
	c. Revenue			448,907
6. Public Street & Highway Lighting	a. No. Consumers Served	208	208	
	b. KWH Sold			47,978
	c. Revenue			17,922
7. Non Metered Device Authority	a. No. Consumers Served	8	7	
	b. KWH Sold			0
	c. Revenue			1,772
8. Sales for Resales-RUS Borrowers	a. No. Consumers Served			
	b. KWH Sold			
	c. Revenue			
9. Sales for Resales-Other	a. No. Consumers Served			
	b. KWH Sold			
	c. Revenue			
10. TOTAL No. of Consumers (lines 1a thru 9a)		20,521	20,435	
11. TOTAL KWH Sold (lines 1b thru 9b)				26,341,563
12. TOTAL Revenue Received From Sales of Electric Energy (line 1c thru 9c)				2,642,538
13. Transmission Revenue				0
14. Other Electric Revenue				16,593
15. KWH - Own Use				760
16. TOTAL KWH Purchased				33,805,949
17. TOTAL KWH Generated				
18. Cost of Purchases and Generation				1,245,961
19. Interchange - KWH - Net				
20. Peak - Sum All KW Input (Metered)				69,121

Electric Division
Comparison 2021 Budget to 2021 Actuals Year to Date Through OCTOBER

	2021 Budget OCTOBER YTD	2021 Actuals OCTOBER YTD	Variance
1. Operating Revenue and Patronage Capital	30,237,206	31,227,934	990,728
2. Power Production Expense	0	0	0
3. Cost of Purchased Power	12,696,688	12,153,639	(543,049)
4. Transmission Expense	1,449,583	1,560,761	111,178
5. Regional Market Operations Expense	0	0	0
6. Distribution Expense - Operation	1,609,490	1,632,851	23,361
7. Distribution Expense - Maintenance	3,069,452	2,818,494	(250,958)
8. Consumer Accounts Expense	1,255,000	1,331,021	76,021
9. Customer Service and Informational Expense	23,680	25,359	1,679
10. Sales Expense	0	0	0
11. Administrative and General Expense	2,457,299	2,855,916	398,617
12. Total Operation & Maintenance Expense (2 thru 11)	22,561,192	22,378,041	(183,151)
13. Depreciation & Amortization Expense	4,753,660	4,613,224	(140,436)
14. Tax Expense - Property & Gross Receipts	0	0	0
15. Tax Expense - Other	2,137,197	1,807,581	(329,616)
16. Interest on Long-Term Debt	2,165,366	2,162,465	(2,901)
17. Interest Charged to Construction (Credit)	0	0	0
18. Interest Expense - Other	0	0	0
19. Other Deductions	78	0	(78)
20. Total Cost of Electric Service (12 thru 19)	31,617,493	30,961,311	(656,182)
21. Patronage Capital & Operating Margins (1 minus 20)	(1,380,287)	266,623	1,646,910
22. Non Operating Margins - Interest	72,315	4,529	(67,786)
23. Allowance for Funds Used During Construction	0	0	0
24. Income (Loss) from Equity Investments	0	0	0
25. Non Operating Margins - Other	2,283,040	1,845,914	(437,126)
26. Generation & Transmission Capital Credits	0	0	0
27. Other Capital Credits & Patronage Dividends	0	0	0
28. Extraordinary Items	0	0	0
29. Patronage Capital or Margins (21 thru 28)	975,068	2,117,066	1,141,998

Jefferson County PUD No. 1
Water Division
Statement of Operations
As of October 31, 2021

PART A. STATEMENT OF OPERATIONS				
ITEM	YEAR-TO-DATE			THIS MONTH
	LAST YEAR	THIS YEAR	BUDGET	
	(a)	(b)	(c)	
1. Operating Revenue and Patronage Capital	2,216,765	2,542,835	2,282,357	250,307
2. Power Production Expense	268	1,221	542	0
3. Cost of Purchased Power	61,315	114,534	166,667	11,206
4. Transmission Expense	0	0	0	0
5. Regional Market Operations Expense	0	0	0	0
6. Distribution Expense - Operation	570,300	535,831	896,979	59,115
7. Distribution Expense - Maintenance	302,651	308,337	459,622	24,553
8. Consumer Accounts Expense	175,139	209,817	191,252	21,197
9. Customer Service and Informational Expense	110	0	0	0
10. Sales Expense	0	0	0	0
11. Administrative and General Expense	727,581	851,453	971,522	83,534
12. Total Operation & Maintenance Expense (2 thru 11)	1,837,364	2,021,193	2,686,584	199,605
13. Depreciation & Amortization Expense	559,297	644,992	612,996	64,872
14. Tax Expense - Property & Gross Receipts	0	0	0	0
15. Tax Expense - Other	107,797	132,571	92,844	12,423
16. Interest on Long-Term Debt	198,398	182,435	189,156	17,460
17. Interest Charged to Construction (Credit)	0	0	0	0
18. Interest Expense - Other	0	0	0	0
19. Other Deductions	0	0	0	0
20. Total Cost of Water Service (12 thru 19)	2,702,856	2,981,191	3,581,580	294,360
21. Patronage Capital & Operating Margins (1 minus 20)	(486,091)	(438,356)	(1,299,223)	(44,053)
22. Non Operating Margins - Interest	65,603	25,424	112,275	602
23. Allowance for Funds Used During Construction	0	0	0	0
24. Income (Loss) from Equity Investments	0	0	0	0
25. Non Operating Margins - Other	279,406	645,095	595,751	29,922
26. Generation & Transmission Capital Credits	0	0	0	0
27. Other Capital Credits & Patronage Dividends	3,201	0	0	0
28. Extraordinary Items	0	0	0	0
29. Patronage Capital or Margins (21 thru 28)	(137,881)	232,163	(591,197)	(13,529)

Jefferson County PUD No. 1
Water Division
Balance Sheet
October 31, 2021

PART B. BALANCE SHEET			
ASSETS AND OTHER DEBITS		LIABILITIES AND OTHER CREDITS	
1. Total Utility Plant in Service	31,109,865	29. Memberships	0
2. Construction Work in Progress	1,359,533	30. Patronage Capital	0
3. Total Utility Plant (1+2)	32,469,398	31. Operating Margins - Prior Years	0
4. Accum. Provision for Depreciation and Amort	13,058,209	32. Operating Margins - Current Year	(438,356)
5. Net Utility Plant (3-4)	19,411,189	33. Non-Operating Margins	670,520
6. Nonutility Property - Net	2,165,068	34. Other Margins & Equities	22,988,227
7. Investment in Subsidiary Companies	0	35. Total Margins & Equities (29 thru 34)	23,220,391
8. Invest. in Assoc. Org. - Patronage Capital	0	36. Long-Term Debt RUS (Net)	0
9. Invest. in Assoc. Org. - Other - General Funds	0	37. Long-Term Debt - Other (Net)	5,250,455
10. Invest in Assoc. Org. - Other - Nongeneral Funds	0	38. Total Long-Term Debt (36 + 37)	5,250,455
11. Investments in Economic Development Projects	0	39. Obligations Under Capital Leases - Non current	0
12. Other Investments	0	40. Accumulated Operating Provisions	0
13. Special Funds	170,817	41. Total Other Noncurrent Liabilities (39+40)	0
14. Total Other Property & Investments (6 thru 13)	2,335,885	42. Notes Payable	765,671
15. Cash-General Funds	181,049	43. Accounts Payable	(4,401,255)
16. Cash-Construction Funds-Trustee	0	44. Consumers Deposits	500
17. Special Deposits	0	45. Current Maturities Long-Term Debt	0
18. Temporary Investments	2,090,669	46. Current Maturities Long-Term Debt-Economic Dev.	0
19. Notes Receivable - Net	0	47. Current Maturities Capital Leases	0
20. Accounts Receivable - Net Sales of Energy	190,787	48. Other Current & Accrued Liabilities	31,423
21. Accounts Receivable - Net Other	472,149	49. Total Current & Accrued Liabilities (42 thru 48)	(3,603,661)
22. Renewable Energy Credits	0	50. Deferred Credits	0
23. Materials & Supplies - Electric and Other	36,222	51. Total Liabilities & Other Credits (35+38+41+49+50)	24,867,185
24. Prepayments	0		
25. Other Current & Accrued Assets	149,235	ESTIMATED CONTRIBUTION-IN-AID-OF-CONSTRUCTION	
26. Total Current & Accrued Assets (15 thru 25)	3,120,111	Balance Beginning of Year	0
27. Deferred Debits	0	Amounts Received This Year (Net)	344,309
28. Total Assets & Other Debits (5+14+26+27)	24,867,185	TOTAL Contributions-In-Aid-Of-Construction	344,309

Equity Ratio **93.38%**
 (Total Margins & Equities/Total Assets & Other Debits) x 100

Long-Term Debt to Total Plant Ratio **16.17%**
 (Long Term Debt/Total Utility Plant) x 100

Jefferson County PUD #1
Water Requirements
As of October 31, 2021

PART C. WATER REQUIREMENTS DATABASE				
CLASSIFICATION	CONSUMER, SALES, AND REVENUE DATA	OCTOBER CONSUMERS (b)	AVERAGE CONSUMERS (c)	Monthly Gallons SALES AND REVENUE (d)
1. Unmetered Water Sales	a. No. Consumers Served	13	12	
	b. Gallons Sold			4,568
	c. Revenue			1,067
2. Metered Residential Sales -	a. No. Consumers Served	4,604	4,566	
	b. Gallons Sold			16,410,754
	c. Revenue			194,806
3. Metered Commercial Sales	a. No. Consumers Served	321	319	
	b. Gallons Sold			4,644,237
	c. Revenue			40,666
4. Residential Multi-Family	a. No. Consumers Served	47	46	
	b. Gallons Sold			172,700
	c. Revenue			2,953
5. Metered Bulk Loadings	a. No. Consumers Served	1	1	
	b. Gallons Sold			0
	c. Revenue			36
6. Public Authority	a. No. Consumers Served	5	5	
	b. Gallons Sold			0
	c. Revenue			0
7. Master Meters	a. No. Consumers Served	22	22	
	b. Gallons Sold			13,842,880
	c. Revenue			0
8. Sewer/Drain Field--Residential	a. No. Consumers Served	376	376	
	b. Gallons Sold			0
	c. Revenue			10,266
9. Sales for Resales-Other	a. No. Consumers Served			
	b. Gallons Sold			
	c. Revenue			
10. TOTAL No. of Consumers (lines 1a thru 9a)		5,389	5,347	
11. TOTAL Gallons Sold (lines 1b thru 9b)				35,075,139
12. TOTAL Revenue Received From Sales of Water Gallons (line 1c thru 9c)				249,794
13. Bulk Water Gallons Sold Revenue				
14. Other Water Revenue				550
15. Gallons - Own Use				
16. TOTAL Gallons Purchased				
17. TOTAL Gallons Produced				23,910,167
18. Cost of Purchases and Generation				11,206

Water Division
Comparison 2021 Budget to 2021 Actuals Year to Date Through OCTOBER

	2021 Budget OCTOBER YTD	2021 Actuals OCTOBER YTD	Variance
1. Operating Revenue and Patronage Capital	2,282,357	2,542,835	260,478
2. Power Production Expense	542	1,221	679
3. Cost of Purchased Power	166,667	114,534	(52,133)
4. Transmission Expense	0	0	0
5. Regional Market Operations Expense	0	0	0
6. Distribution Expense - Operation	896,979	535,831	(361,148)
7. Distribution Expense - Maintenance	459,622	308,337	(151,285)
8. Consumer Accounts Expense	191,252	209,817	18,565
9. Customer Service and Informational Expense	0	0	0
10. Sales Expense	0	0	0
11. Administrative and General Expense	971,522	851,453	(120,069)
12. Total Operation & Maintenance Expense (2 thru 11)	2,686,584	2,021,193	(665,391)
13. Depreciation & Amortization Expense	612,996	644,992	31,996
14. Tax Expense - Property & Gross Receipts	0	0	0
15. Tax Expense - Other	92,844	132,571	39,727
16. Interest on Long-Term Debt	189,156	182,435	(6,721)
17. Interest Charged to Construction (Credit)	0	0	0
18. Interest Expense - Other	0	0	0
19. Other Deductions	0	0	0
20. Total Cost of Water Service (12 thru 19)	3,581,580	2,981,191	(600,389)
21. Patronage Capital & Operating Margins (1 minus 20)	(1,299,223)	(438,356)	860,867
22. Non Operating Margins - Interest	112,275	25,424	(86,851)
23. Allowance for Funds Used During Construction	0	0	0
24. Income (Loss) from Equity Investments	0	0	0
25. Non Operating Margins - Other	595,751	645,095	49,344
26. Generation & Transmission Capital Credits	0	0	0
27. Other Capital Credits & Patronage Dividends	0	0	0
28. Extraordinary Items	0	0	0
29. Patronage Capital or Margins (21 thru 28)	(591,197)	232,163	823,360

**Jefferson County PUD No. 1
Cash and Cash Equivalents
As of October 31, 2021**

<u>G/L #</u>	<u>Account Description</u>	<u>Balance</u>
1 131.11	Operating Depository Account - Bank of America	\$726,820
1 131.12	Operating Account - Jefferson Co. Treasurer	194,752
2 131.01	Cash-Jeff Co Treasurer General Account	127,433
2 131.11	1996 Bond LUD #8 - Jefferson Co. Treasurer	30,471
2 131.14	2009 Bond LUD #14 - Jefferson Co. Treasurer	13,693 Restricted
2 131.10	1996 Bond LUD #6 - Jefferson Co. Treasurer	9,209
1 135.21	Working Funds - Petty Cash and CSR Drawers	1,850
2 135.21	Cash Held in Trust by Property Manager	150
2 131.12	1999 Bond LUD #11 - Jefferson Co. Treasurer	69 Restricted
2 131.15	2008 Bond LUD #15 - Jefferson Co. Treasurer	24 Restricted
1 131.16	Payroll Clearing Account - 1st Security Bank	6
TOTAL LINE 15. BALANCE SHEET-CASH-GENERAL FUNDS		\$1,104,477
1 136.16	Tax Revenue Fund - Jefferson Co. Treasurer	\$3,344,516
1 136.10	Operating Account Related Investment - Jefferson Co. Treasurer	2,840,689
1 136.17	Tax Revenue Investment Fund - Jefferson Co. Treasurer	1,925,000
2 136.14	LUD #14 Bond Investment - Jefferson Co. Treasurer	1,051,274 Restricted
2 136.16	Tax Revenue Fund - Jefferson Co. Treasurer	726,304
2 136.15	LUD #15 Bond Investment - Jefferson Co. Treasurer	313,091 Restricted
TOTAL LINE 18. BALANCE SHEET-TEMPORARY INVESTMENTS		\$10,200,874
2 126.31	Tri Area Bond Reserve Investment Fund - Jefferson Co. Treasurer	\$164,817 Restricted
1 126.10	Capital Reserves	94,000 Restricted
2 126.10	Capital Reserves	6,000 Restricted
1 128.00	Other Special Funds	250 Restricted
TOTAL LINE 13. BALANCE SHEET-SPECIAL FUNDS		\$265,067
RESTRICTED CASH BALANCE--OCTOBER 2021		\$1,631,312
NON-RESTRICTED CASH BALANCE--OCTOBER 2021		\$9,939,106
TOTAL CASH AND CASH EQUIVALENTS IN BANK--OCTOBER 2021		\$11,570,418
TOTAL CASH AND CASH EQUIVALENTS IN BANK--SEPTEMBER 2021		\$13,855,004
Change in Bank Balance		(\$2,284,586)

FINANCE

Balance Sheet

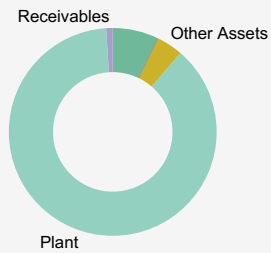
Select specific balance sheet accounts below to view detailed account listing and balances

Current Month End Date
To 10/31/2021 12:00:00 ..

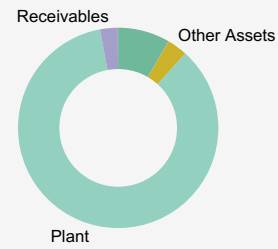
Prior Month End Date
To 10/31/2020 12:00:00 ..

ASSETS

Current Month



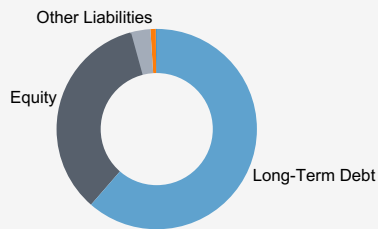
Prior Year



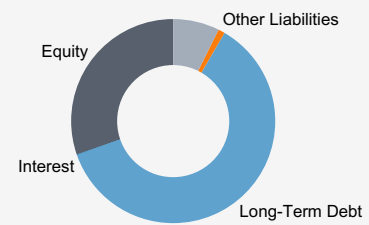
■ Cash
 ■ Inventory
 ■ Investments
 ■ Other Assets
 ■ Plant
 ■ Receivables

LIABILITIES AND EQUITY

Current Month



Prior Year



■ Interest
 ■ Other Liabilities
 ■ Payables
 ■ Equity
 ■ Long-Term Debt

INCOME STATEMENT

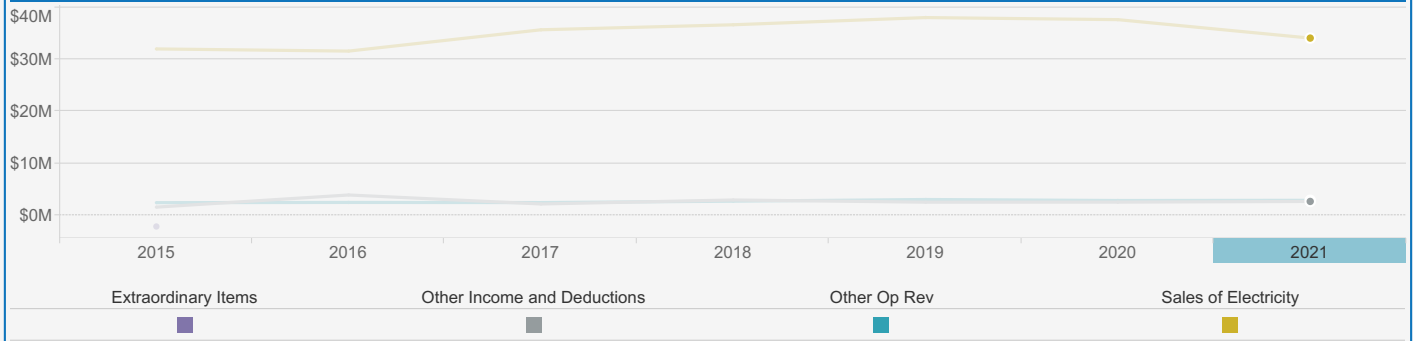
Revenues

Utility
All

Years to View Annually
2015 to 2021
and Null values

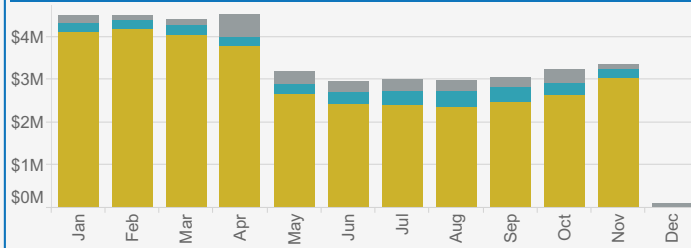
Select color legend below to view the revenue type and associated yearly and monthly trends in detail. Select a year on the annual revenue trend to view data for a specific year.

Annual Revenue Trend

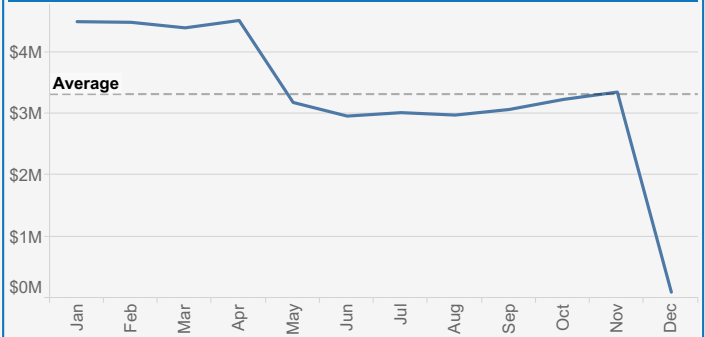


Select Revenue View
Revenue Type

Revenue Breakdown by Revenue Type & Selected Year(s)



Monthly Revenue Trend for Selected Year(s)





INCOME STATEMENT

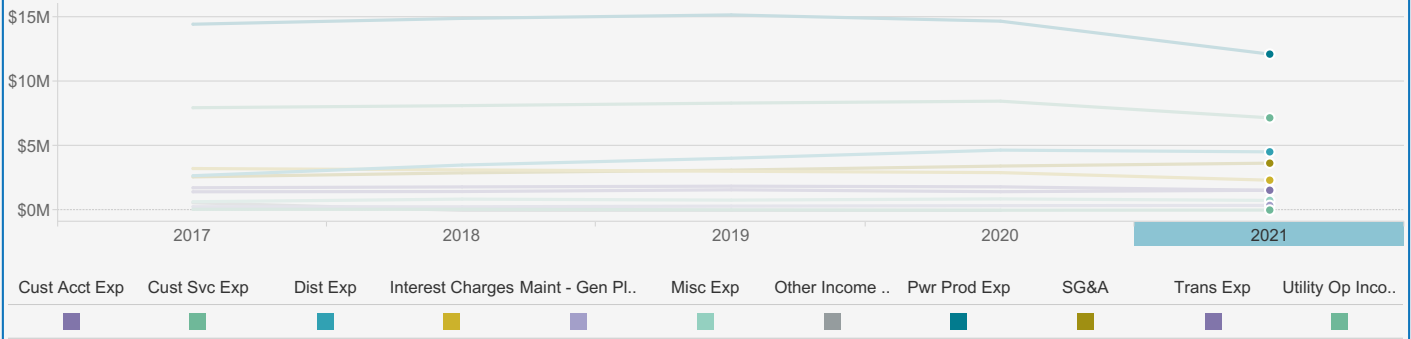
Operating Expenses

Select color legend below to view the expense type and associated yearly and monthly trends in detail. Select a year in the annual expense trend to filter on a specific year.

Utility
All

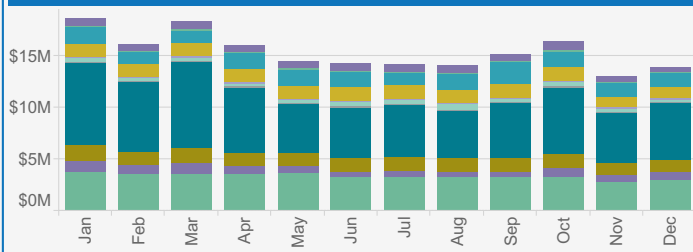
Years to View Annually
2017 to 2021
and Null values

Annual Operating Expenses Trend

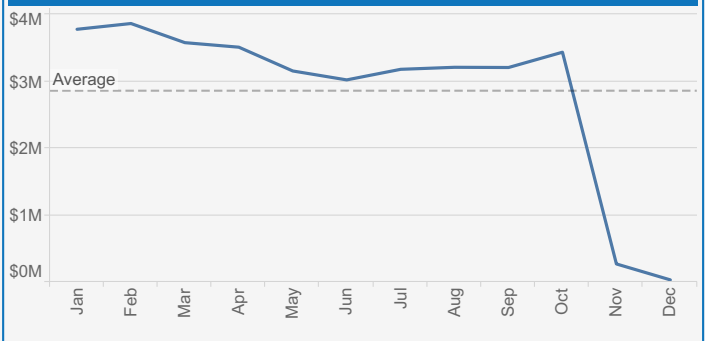


Select Expense View
Expense Type

Expense Breakdown by Expense Type & Selected Year(s)



Monthly Expense Trend for Selected Year(s)





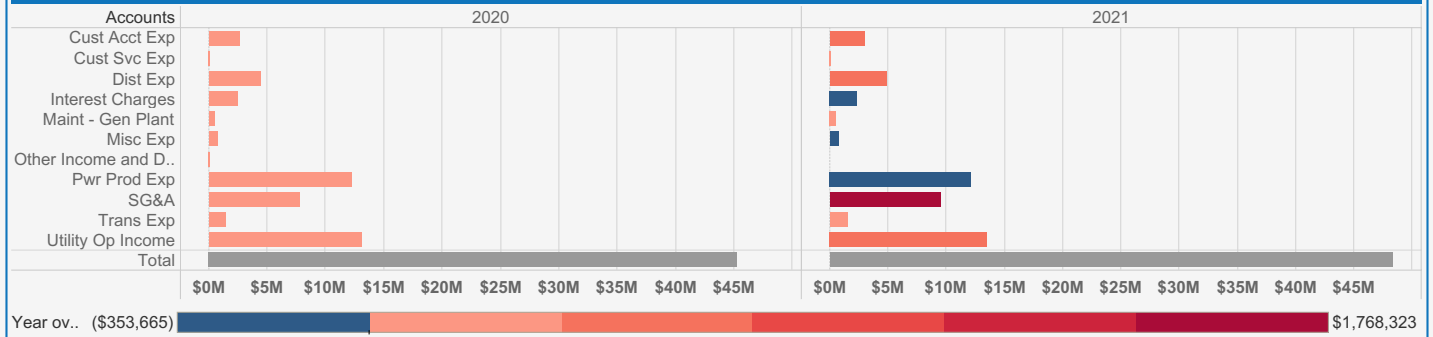
INCOME STATEMENT

Operating and Non-operating Expenses

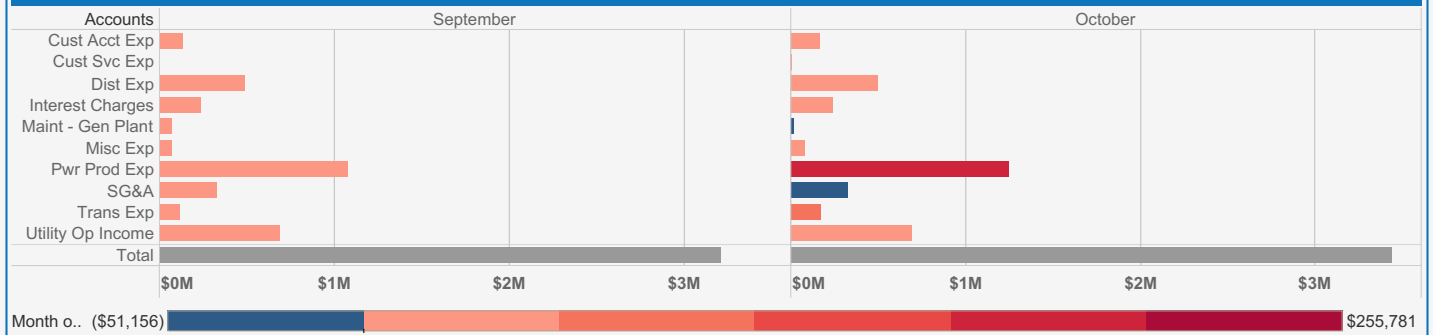
Hover over bar graphs to view activity, \$ and % change

Month End
October 2021

YTD Expenses Compared to Prior Year



Expenses Compared to Prior Month



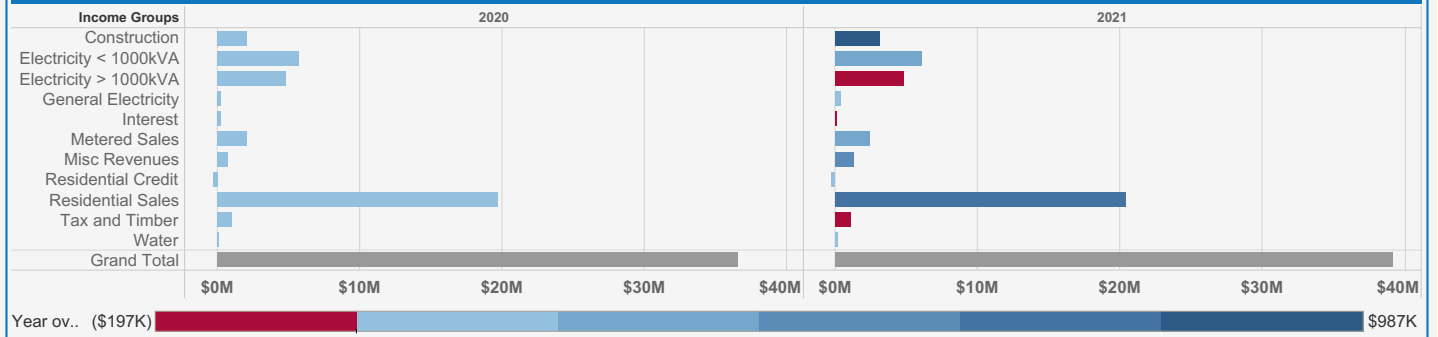
INCOME STATEMENT

Year over Year Changes

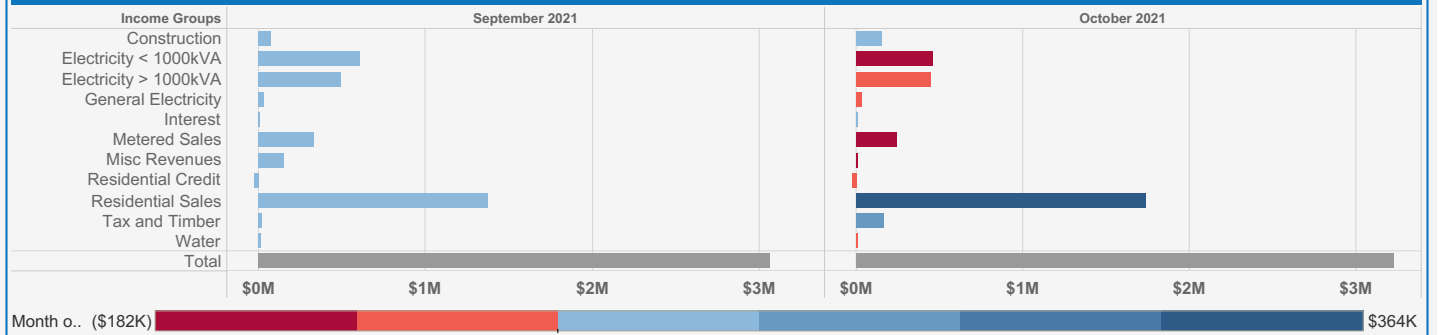
Hover over bar graphs to view activity, \$ and % change

Month End
October 2021

YTD Revenues Compared to Prior Year



Revenues Compared to Prior Month



PUD Calendar

December 14, 2021

December 16, 2021 All hands meeting 12:00 per ZOOM

December 24, 2021 Office closed – in observance of Christmas Day

December 31, 2021 Office closed – in observance of New Year's Day

January 4, 2022 BOC Regular Meeting, 4:00 PM, ZOOM



AGENDA REPORT

DATE: December 14, 2021

TO: Board of Commissioners, PUD No. 1 of Jefferson County

FROM: Samantha Harper, P.E. Engineering Director

RE: 2021 Water System Plan (WSP) Update Volume 2 Chapters 3-9 (Gardiner, Coyle, Quimper, Lazy C, Triton Cove, Snow Creek, Mats View, Quilcene Water Systems) and Volume 3

BACKGROUND: What follows is the summary of the Water System Plan Update history:

*On August 25, 2020, staff reviewed with the Commission the content and layout of the 2020 WSP Update **Volume 1**. Volume 1 is comprised of Public Utility District (PUD) policies and standards. On September 10, 2020, staff reviewed with the Commission the content and layout of the 2020 WSP Update **Volume 2**. Volume 2 is an analysis of each Group A water system. In addition to the WSP content review, on September 23, 2020, the Commission approved by motion the 2020-2025 Water Use Efficiency Goal Program. The presentation of the above-mentioned public meetings can be reviewed on the PUD's website at <https://www.jeffpud.org/water-system-planning/>.*

On November 24, 2020, Volume 2 was submitted to Washington State Department of Health (DOH). DOH provided comments to the 2020 WSP Update Volume 2 in June of 2021.

On January 11, 2021, the PUD submitted the 2020 WSP Update to Jefferson County Public Health for Satellite Management Agency (SMA) Review and on January 12, 2021 to Jefferson County Planning Department for Consistency Review with the County's Comprehensive Plan

Also, on January 11, 2021, the PUD provided a mailed notice to all the adjacent and non-adjacent water system purveyors to review the PUD's 2020 WSP Update. No comments were received by the end of the comment period on February 8, 2021.

The State Environmental Policy Act (SEPA) checklist and determination were noticed in the PT Leader, mailed to the SEPA contact list and posted on the PUD's website. One comment was received by the Department of Archeological and Historical Preservation (DAHP).

On March 16, 2021, the Board of Commissioners approved 2021 Water System Plan Updated Volumes 1 and 2 Chapters 1 (General Methodologies for Individual System Evaluations) and 2 (Bywater Bay Water System) on March 16, 2021 (Resolution No. 2021-008). DOH approved 2021 Water System Plan Updated Volumes 1 and 2 Chapters 1 (General Methodologies for Individual System Evaluations) and 2 (Bywater Bay Water System) on March 30, 2021.

ANALYSIS/FINDINGS: The 2021 PUD No. 1 of Jefferson County Water System Plan Update is posted on the PUD's website at <https://www.jeffpud.org/water-system-planning/> : Staff seeks the Board of Commissioners' approval of the 2021 Water System Plan Volumes 2 Chapters 3-9 (Gardiner, Coyle, Quimper, Lazy C, Triton Cove, Snow Creek, Mats View, Quilcene Water Systems)The Water System Plan presented also incorporates the comments from the State Department of Health (DOH).

The next step is approval by DOH.

FISCAL IMPACT: None

RECOMMENDATION: Approval of Resolution2021-0XX, adoption of the 2021 PUD No. 1 of Jefferson County Water System Plan Volume 2 Chapters 3-9 (Gardiner, Coyle, Quimper, Lazy C, Triton Cove, Snow Creek, Mats View, Quilcene Water Systems) and Volume 3.

Attachments: 1. Resolution 2021-0XX Adoption of the 2021 WSP Update Volume 2 Chapters 3-9 and Volume 3
2. JPUD Response to Comments

**PUBLIC UTILITY DISTRICT NO.1
OF
JEFFERSON COUNTY**

RESOLUTION NO. 2021-0__

A RESOLUTION of the Board of Commissioners of Public Utility District (JPUD) No. 1 of Jefferson County, Washington adopting the JPUD 2021 Water System Plan Volume 2 Chapters 3-9 (Gardiner, Coyle, Quimper, Lazy C, Triton Cove, Snow Creek, Mats View, Quilcene Water Systems) and Volume 3.

WHEREAS, Public Utility District No. 1 of Jefferson County, on the 18th of March 1998, by Resolution 98-469, adopted a Comprehensive Water System Plan (WSP) for the District; and

WHEREAS, JPUD in accordance with WAC 246-290 updated its WSP in 2005; and

WHEREAS, JPUD in accordance with WAC 246-290 updated its WSP in 2011 (Resolution No. 2011-008); and

WHEREAS, JPUD in accordance with WAC 246-290 has updated its WSP in 2020; and

WHEREAS, on August 25, 2020, JPUD held a public meeting in which the regulatory framework and the District wide policies in Volume 1 of the WSP Update were presented and discussed; and

WHEREAS, on September 10, 2020, JPUD held a public meeting in which the technical analysis required by the Washington State Department of Health (DOH) and the analysis methodologies utilized for each of JPUD's nine (9) Group A water systems in Volume 2 of the WSP Update were discussed; and

WHEREAS, on September 23, 2020, JPUD held a special meeting of the Board of Commissioners and public forum in which the Water Use Efficiency (WUE) requirements, JPUD's existing WUE program and the 2020-2025 Water Use Efficiency Goal Program were discussed. In addition, the Board of Commissioners approved by motion the 2020-2025 WUE Goals; and

WHEREAS, the Water System Plan update Volume 2 was submitted to the Washington State Department of Health for review on November 24; and

WHEREAS, JPUD staff has incorporated DOH comments and recommendations into the JPUD 2021 Water System Plan; and

WHEREAS, the adjacent water purveyors and non-adjacent water system purveyors were provided notice to review the WSP Update on January 11, 2021. No comments were received by the end of the comment period on February 8, 2020; and

WHEREAS, on February 23, 2021, Jefferson County Environmental Public Health provided a determination of the Satellite Management Agency (SMA) Consistency with Local Plans and Policies for the WSP Update; and

WHEREAS, on March 1, 2021, the Jefferson County Department of Community Development provided a determination of Local Government Consistency for the WSP Update; and

WHEREAS, the State Environmental Policy Act (SEPA) checklist and determination were noticed in the PT Leader, mailed to the SEPA contact list and posted on JPUD's website. One comment was received by the Department of Archeological and Historical Preservation (DAHP); and

WHEREAS, the Board of Commissioners approved the 2021 Water System Plan Updated Volumes 1 and 2 Chapters 1 (General Methodologies for Individual System Evaluations) and 2 (Bywater Bay Water System) on March 16, 2021 (Resolution No. 2021-008); and

NOW, THEREFORE, BE IT RESOLVED by the Board of Commissioners of Public Utility District No. 1 of Jefferson County as follows:

Section 1. The foregoing recitals are hereby incorporated into this Resolution.

Section 2. The operational policies, procedures, and standards contained within the Public Utility District No. 1 of Jefferson County, 2021 Water System Plan Update, Volumes 2 Chapters 3-9 (Gardiner, Coyle, Quimper, Lazy C, Triton Cove, Snow Creek, Mats View, Quilcene Water Systems) and 3 dated December 2021 are hereby confirmed and approved and supersede the PUD's Water System Plan dated June 2011.

Section 3. The 2021 Water System Plan Update, Volumes 2 Chapters 3-9 (Gardiner, Coyle, Quimper, Lazy C, Triton Cove, Snow Creek, Mats View, Quilcene Water Systems) and 3 will go into effect upon the approval from DOH.

ADOPTED at a regular meeting of the Board of Commissioners of Public Utility District No. 1 of Jefferson County, this 14th day of December 2021.

Dan Toepper, President

Kenneth Collins, Vice President

ATTEST:

Jeff Randall, Secretary



AGENDA REPORT

DATE: December 14, 2021
TO: Board of Commissioners
FROM: Kevin Streett, Samantha Harper
RE: **Sewer Rates** - Postage Stamp Rate Discussion

BACKGROUND: JPUD's sewer rate discussion BOC recommendation was:

- A three system rate allocation: Standard \$74.62/month; Beckett Point \$104.00/month and Kala Point \$43.23/month; and
- 5-year phase in to reach the cost of service; and
- Staff to meet with the Beckett Point and Kala Point communities to talk about rates based on cost of service for individual systems.

With the finalization of the cost of service report staff plans to meet with the Beckett Point and Kala Point customers in January 2022.

ANALYSIS/FINDINGS: While the rate discussion contained many possible changes and phase in scenarios, before staff meets with the affected communities, staff requests the BOC reconsider the postage stamp rate option for sewer. Water, electric, and broadband rates are standard across all systems and locations. Postage stamp rates simplify planning, communication, and understanding of rates; and provide customers a sense of fairness. Staff therefore requests that the BOC consider all PUD rates be postage stamp rates. With the BOC recommendation(s), staff will schedule meetings with both Beckett Point and Kala Point customers and then bring a sewer rate increase with 5-year phase-in Resolution back to the BOC for approval.

FISCAL IMPACT: The table shows a 5-year phase-in implementation plan for the Standard, Beckett Point and Kala Point Rates, as compared to a postage stamp rate.

		Year 1	Year 2	Year 3	Year 4	Year 5	Year 6
Rate Allocation Type	Existing	2022	2023	2024	2025	2026	2027
Standard	\$ 30.80	\$ 41.63	\$ 50.29	\$ 57.22	\$ 62.76	\$ 67.19	\$ 84.93
Beckett Point	\$ 30.80	\$ 48.31	\$ 62.31	\$ 73.52	\$ 82.48	\$ 89.65	\$ 118.34
Kala Point	\$ 20.00	\$ 25.84	\$ 30.52	\$ 34.26	\$ 37.25	\$ 39.65	\$ 49.22
Postage Stamp	\$ 30.80	\$ 40.71	\$ 48.63	\$ 54.97	\$ 60.04	\$ 64.10	\$ 80.33

At Year 1, without a 5-year phase in the rates would be:

Rate Allocation Type	Year 1 without 5-year phase-in
Standard	\$ 74.62
Beckett Point	\$ 104.00
Kala Point	\$ 43.23
Postage Stamp	\$ 70.58

RECOMMENDATION: Discussion and recommendation.



AGENDA REPORT

DATE: December 14, 2021
TO: Board of Commissioners
FROM: Will O'Donnell
RE: **CETA CEIP Report**

BACKGROUND: Washington's consumer-owned utilities are required to complete the Clean Energy Implementation Plan (CEIP) template by Jan. 1, 2022. The CEIP documents how a utility intends to comply with Clean Energy Transformation Act (CETA)'s clean energy and equity requirements over the next four years and make progress towards the 2030 greenhouse gas neutral and 2045 greenhouse gas free standards.

ANALYSIS/FINDINGS: As a tier 1 BPA customer, the PUD meets and exceeds the CETA requirement of using 80% or greater combined renewable and non-emitting resources for its retail load over the next four years and through 2030. However, to complete the equity requirements of the plan, the CEIP further requires the PUD to identify, through a public process, both vulnerable populations who might be affected by the costs and benefits of adopting CETA standards and indicators of costs and benefits incurred through the PUD's adoption of CETA standards.

In order to meet the public process requirements, PUD staff will lead a roundtable discussion with the CAB on the 13th, speak with local community action agencies, and review the CEIP document with the BOC on the 14th. The CEIP document included with the packet is a draft document. Some changes may be made prior to and during the meeting on the 14th.

If more time is needed for discussion with the BOC prior to adoption, the plan will have to be reviewed and approved at a subsequent public meeting prior to Jan 1, 2022.

FISCAL IMPACT: n/a

RECOMMENDATION: Approve a motion adopting the PUD's Clean Energy Implementation Plan and authorizing staff to submit to the State of Washington.

JPUD CETA CEIP PUBLIC INPUT SURVEY

CLEAN ENERGY TRANSFORMATION ACT (CETA)

Sets Washington on a path towards clean energy:

- Coal-free by end of 2025
- Greenhouse gas neutral by Jan 1, 2030 (Up to 20% from alternative compliance mechanisms)
- 100% Non-emitting / Renewable by Jan 1, 2045

Includes provisions to ensure transition happen equitably, track & reduce energy burdens

CLEAN ENERGY IMPLEMENTATION PLAN (CEIP)

- Required every four years beginning Jan 1, 2022
- Must be approved by utility governing body
- Four-year plan for meeting CETA requirements for energy, equity
- Public input is required during the development

CEIP CONTENTS – EQUITY PORTION AND PUBLIC INPUT

- Identify highly impacted communities (defined by State)
- Identify vulnerable populations (defined through public process)
- One or more indicators (defined through public process) used to estimate the distribution of costs and benefits from the utility actions planned to meet identified targets
- How the utility will reduce risks to highly impacted communities and vulnerable populations

JPUD CETA CEIP PUBLIC INPUT SURVEY

Help Identify Vulnerable Populations:

How is vulnerable defined? Communities that experience a disproportionate cumulative risk from environmental burdens due to:

- (a) Adverse socioeconomic factors, including unemployment, high housing and transportation costs relative to income, access to food and health care, and linguistic isolation; and*
- (b) Sensitivity factors, such as low birth weight and higher rates of hospitalization*

Examples of Vulnerable Populations the PUD encounters frequently:

- Low Income Households
- Low Income Seniors
- Rainy Day Fund Recipients
- Repeat Shutoff Customers

Are there other Vulnerable Populations you think we should add?

Which Vulnerable Populations are most impacted or benefited by the PUD's efforts to meet CETA standards?

JPUD CETA CEIP PUBLIC INPUT SURVEY

Help Identify Indicators

Indicators are the metrics that used to measure the costs and benefits of the targeted actions the PUD is taking to meet clean energy standards. The actions the PUD is taking to maintain an 80% or better mix of renewable and non-emitting sources over the next for years; and to move closer to 2030 and 2045 goals respectively are as follows:

1. *Continue to purchase and provide 90+% carbon free tier one BPA power to our customers*
2. *Increase Energy Efficiency program offerings and kWh savings*

Indicators must be associated with one of the following categories: energy benefits, non-energy benefits, reduction of burdens, public health, environment, reduction in cost, energy security, or resiliency.

Energy Benefits	Non-Energy Benefits	Reduction of Burdens	Public Health	Environment	Reduction in Cost	Energy Security	Resiliency

Draft Examples of how the Indicators are used in the CEIP report:

Category	Indicator	Details	Source	Date Last Updated
Energy and non-energy benefits, reduction in cost	Distribution of EE program participation and incentive dollars	Track the distribution of EE program participation across customer types	Utility program data	2021
Public Health, Environment	Fuel Switching	EE loan program to fund conversion to electric heating, cooking, transportation	Utility program data	n/a

Utility name:	Jefferson County PUD
Report date:	12/23/2022
Contact name/Dept:	Will O'Donnell, Communications
Phone:	3603858369
Email:	wodonnell@jeffpud.org
Web address of published CEIP:	jeffpud.org/ceta
Small utility:	Yes

A small utility is a utility that is not required by RCW 19.280.030(1) to prepare an integrated resource plan.

Interim target: Percentage of retail load to be served using renewable and nonemitting resources (WAC 194-40-200(2))

Resource	2022	2023	2024	2025	4-year Period
Renewable	0%	0%	0%	0%	0%
Nonemitting	0%	0%	0%	0%	0%
Total	0%	0%	0%	0%	92%

[Small utilities may enter a single value in cell G6 and leave the remaining cells blank.]

Describe how the target demonstrates progress toward meeting the 2030 and 2045 CETA standards (WAC 194-40-200(2)). This section is not required if the value in cell G6 is 80% or greater:

Specific targets (WAC 194-40-200(3)):

Resource	Amount	
Energy Efficiency	6,242.980	MWh to be acquired over the interim performance period (measured in first-year savings)
Renewable energy	1,311,021.995	MWh to be used during the interim performance period
Demand response		MW to be acquired over the interim performance period

Identify and describe the specific actions the utility will take over the next interim performance period to demonstrate progress toward meeting the utility's interim targets and the 2030 GHG neutral and 2045 clean electricity standard (WAC 194-40-200(1)):	
Specific action proposed	Description of how the action demonstrates progress toward meeting interim targets and the standards
Continue purchasing tier one energy from BPA	BPA's fuel mix has been over 95% carbon-free for the last four years and is projected to be at least 92% renewable and non-emitting for the next four, meeting the statutory clean energy standard established by CETA for the 2022-2025 reporting period.
Increase energy efficiency	Implementing energy efficiency programs will allow Jefferson County PUD to meet the targets identified above and help to minimize future load growth, reducing the need for clean energy resources to comply with CETA's future clean energy standards.

Highly impacted communities (WAC 194-40-200(4))

Report each Highly Impacted Community in the table below.

Highly Impacted Community is defined in RCW 19.405.020(23) as:
(23) "Highly impacted community" means a community designated by the department of health based on cumulative impact analyses in RCW 19.405.140 or a community located in census tracts that are fully or partially on "Indian country" as defined in 18 U.S.C. Sec. 1151.

Department of Health has designated Highly Impacted Communities as those ranking 9 or 10 on the Environmental Health Disparities map. Visit the Department of Health website for instructions on how to identify Highly Impacted Communities:
<https://www.doh.wa.gov/DataandStatisticalReports/WashingtonTrackingNetworkWTN/ClimateProjections/CleanEnergyTransformationAct/CETAUtilityInstructions>

Census Tract (enter 11 digit FIPS code)	County Name	Tribal Lands (Yes/No)	Environmental Health Disparities Topic Rank
53031950500	Jefferson	No	1
53031950300	Jefferson	No	1
53031950400	Jefferson	No	4
53031950202	Jefferson	No	3
53031950601	Jefferson	No	3
53031950602	Jefferson	No	3
53009990100	Clallam	Yes	1
53009002300	Clallam	Yes	2
53031950702	Jefferson	Yes	1

Vulnerable populations (WAC 194-40-200(4))

Please list all socioeconomic factors and sensitivity factors developed through a public process and used to identify Vulnerable Populations based on the definition in RCW 19.405.020(40):

(40) "Vulnerable populations" means communities that experience a disproportionate cumulative risk from environmental burdens due to:

(a) Adverse socioeconomic factors, including unemployment, high housing and transportation costs relative to income, access to food and health care, and linguistic isolation; and

(b) Sensitivity factors, such as low birth weight and higher rates of hospitalization

Factors	Details	Source	Date Last Updated	Approximate number of households in service territory (if applicable)
<i>Ex. COVID cases</i>	<i>Cases by race and ethnicity</i>	<i>Department of Health COVID-19 data dashboard</i>	<i>2021</i>	<i>1,000</i>
Low-income households	Households below 185% of the federal poverty level	American Community Survey (ACS) Table C17002.	2018	8,838
Low-income seniors	Customers receiving the low-income senior discount	Jefferson County PUD customer data	EOY 2020	JEAN
Low-income customers with disabilities	Customers receiving the low-income disability discount	Jefferson County PUD customer data	EOY 2020	JEAN
Customers with unstable housing	Customers with a history of shutoffs	Jefferson County PUD customer data	?	JEAN

Describe and explain any changes to the factors from the utility's previous CEIP, if any:

Distribution of energy and non-energy costs and benefits (WAC 194-40-200(4))

Please report one or more indicators, developed through a public process, and used to identify the forecasted distribution of energy and non-energy costs and benefits for the utility's portfolio of specific actions, including impacts resulting from achievement of the specific targets established under WAC 194-40-200(3).

Indicators must be associated with one of the following categories: energy benefits, non-energy benefits, reduction of burdens, public health, environment, reduction in cost, energy security, or resiliency.

Category	Indicator	Details	Source	Date Last Updated
Ex. Resiliency	Number of outages in utility census tracts	Use SAIDI, CAIDI and SAIFI data geolocated across service territory	Utility data	2021
Energy and non-energy benefits	Distribution of program participation and incentive dollars	Track the distribution of program participation across customer types	Utility program data	2021
Resiliency	Outages	Utility data on outages	Utility data	2021

Please report the forecasted distribution of energy and non-energy costs and benefits on identified highly impacted communities and vulnerable populations for the utility's portfolio of specific actions, including impacts resulting from achievement of the specific targets established under WAC 194-40-200(3). You must do a separate row for each action and for each population affected.

Identify the expected effect of specific actions on highly impacted communities and vulnerable populations and the general location, if applicable, timing, and estimated cost of each specific action. If applicable, identify whether any resource will be located in highly impacted communities or will be governed by, serve, or otherwise benefit highly impacted communities or vulnerable populations in part or in whole.

Utility Specific Action or (e.g. name of resource or program)	Population(s) Affected	Indicator	Detail (describe distribution of energy and non-energy benefits on named population)	Location of Resource (if applicable)
<i>Ex. Replace substation</i>	<i>Tribe</i>	<i>resiliency</i>		<i>substation address</i>
Implement energy efficiency programs to meet identified target	All identified vulnerable populations and highly impacted communities	Distribution of program participation and incentive dollars	While all Jefferson County PUD customers benefit from the acquisition of energy efficiency as a low-cost resource, benefits such as bill savings, incentives, and home improvements often go only to those who can afford the cost of purchasing energy efficient equipment. Jefferson County PUD's planned actions to reduce risks to these populations will help the highly impacted community members and vulnerable populations receive more of these benefits.	n/a
Implement energy efficiency programs to meet identified target	All identified vulnerable populations and highly impacted communities	Outages	Implementing energy efficiency may help reduce the number of outages among the highly impacted communities and vulnerable populations by reducing system peak demands.	n/a

Long-term plans (WAC 194-40-200(4)(c)(iii))

Describe how the specific actions in the CEIP are consistent with, and informed by, the utility's longer-term strategies based on the analysis in RCW 19.280.030 (1)(k) and clean energy action plan in RCW 19.280.030 (1)(l) from its most recent integrated resource plan, if applicable:

BPA assures its power supply is available to meet its firm power supply obligation on a long term planning, forecast, basis. As directed by the Pacific Northwest Electric power planning and Conservation Act, a fundamental statutory purpose for BPA is to assure it has an adequate supply of power, which BPA meets through its power planning function As guided by the Northwest power and Conservation Council power Plan. BPA's firm power supply obligation under the Northwest power Act means BPA supplies all the power a customer needs to serve their retail consumer demands on a continuous basis except for reasons of force majeure. This obligation takes into account and is adjusted by the amount of non-federal power/resources Jefferson County PUD #1 uses to serve their load and by the type of product the Jefferson County PUD #1 elects to purchase from BPA. BPA's currently effective Regional Dialogue load Following Contracts obligates BPA to supply all the electricity required to meet the second to second variation in the Jefferson County PUD #1's load net of the Jefferson County PUD #1's non-federal resources

Risk (WAC 194-40-200(4)(d))

Describe how the utility intends to reduce risks to highly impacted communities and vulnerable populations associated with the transition to clean energy.

Jefferson County PUD identified several potential risks to vulnerable populations during its engagement with community organizations. These included risks associated with the clean energy transition and those that are tangential to it:

- Unstable housing – This includes the risk of becoming homeless due to rising housing costs and tenuous employment/low wages and people living in “unofficial” housing including converted garages and RVs.
- Unhealthy rentals – This includes renters who are living in unsafe conditions but cannot move because of the high costs of moving and lack of other affordable options. It may also include landlords that cannot afford to or choose not to improve their properties.
- Unhealthy single-family homes – This includes homeowners whose generational poverty prevents them from maintaining their homes.
- High utility costs – This includes the challenges people in all types of housing encounter paying utility bills and the compounding debt associated with late/non-payment of utility bills.
- Unhealthy mobile/manufactured homes – This includes people living in homes they rent or own that are unhealthy, uncomfortable, and expensive to heat/cool. These homes are often unimproved because of the high cost of the retrofits compounded by the inability of owners to obtain financing and their low incomes.

Two strategies to address the identified risks are energy efficiency measures and bill payment options. Efficiency measures can improve a home’s health and comfort while reducing utility costs. Bill payment options, including levelized monthly billing, autopay, and pre-payment may help households control utility costs by providing more information about energy use and cost, preventing unexpectedly large bills, and preventing customers from incurring fees associated with unpaid bills.

Bill payment options - Jefferson County PUD already offers levelized billing and autopay and is in process of developing a pre-payment option. In order to expand participation in these billing options to populations who could benefit from them, Jefferson County PUD will explore opportunities to:

- Conduct targeted outreach to vulnerable populations based on their bill payment history (i.e., customers with late payments) to offer alternative bill payment options.
- Default customers with late payments/in arrears/with disconnect notices to levelized billing.
- Offer incentives to customers to adopt alternative bill payment options.
- Partner with community organizations to offer financial and/or efficiency education.

In order to expand efficiency benefits to identified vulnerable populations, Jefferson County PUD will continue efforts undertaken in 2020 and 2021 to educate customers and EE contractors on current incentive program benefits for eligible low-income customers. These efforts will be increased from 2022-2024. The PUD is also in the planning stages for on-bill financing of energy efficiency programs. Such financing, when implemented, would greatly reduce the cash requirements for vulnerable populations to take part in energy efficiency improvements in the home. The PUD has applied for

revolving funding from the USDA’s RUS RESP Loan program. If approved, the program would begin in 2022 and continue through 2024.

Public participation (WAC 194-40-200(4), -220(1))

Provide a summary of the public input process conducted in compliance with WAC 194-40-220. Describe how public comments were reflected in the specific actions under WAC 194-40-200(4), including the development of one or more indicators and other elements of the CEIP and the utility's supporting integrated resource plan or resource plans, as applicable.

In order to identify vulnerable populations, assess the risks to them during the clean energy transition, identify specific actions Jefferson County PUD could take to address those risks, and develop indicators to measure the distribution of costs and benefits, Jefferson County PUD took a two-part approach to gathering public input.

Jefferson County PUD is one of the only public utilities in Washington State with a Citizen Advisory Board (CAB). The nine-member board is comprised of three citizens from each of the county's three electoral districts appointed by the commissioners. Pre-pandemic, the CAB met on the second Monday of each month. Since COVID-19 has met remotely as needed. Meetings are always open to the public.

To engage the CAB on the equity issues involved in the CEIP, a survey and CETA overview document were provided prior to the meeting. During the meeting, PUD staff walked the CAB members through the questions and gathered input.

The PUD also provided surveys via email to community action program staff and followed up with phone calls. PUD Staff compiled the input from the CAB and community action program staff and brought it to the subsequent public meeting of the district's three member publicly elected Board of Commissioners (BOC) meeting. The BOC provided further comment, and the plan was finalized prior to adoption. The finalized plan was then posted on the PUD's website at jeffpud.org/ceta.

Use of alternative compliance options (WAC 194-40-200(5))

Identify any planned use during the period of alternative compliance options, as provided for in RCW 19.405.040(1)(b):

Alternative compliance payments:	n/a	Dollars
Unbundled renewable energy credits:	n/a	Credits
Credits from energy transformation projects:	n/a	MWh
Electricity from the Spokane municipal solid waste to energy facility:	n/a	MWh

Resource adequacy standard (WAC 194-40-200(8))

Identify the resource adequacy standard and measurement metrics adopted by the utility under WAC 194-40-210 and used in establishing the targets in the CEIP.	
Resource adequacy standard	BPA's Regional Dialogue Load Following Product

Methods of measurement	<p>BPA is responsible for assuring an adequate power supply to meet Jefferson County PUD's total retail load.</p> <p>BPA is working to provide further detail on this at a future date. Additional detail can be found in BPA's White Book at https://www.bpa.gov/p/Generation/White-Book/Pages/White-Book.aspx.</p>
------------------------	--

Succession Planning

A Simplified Approach

Agenda for Today's Discussion

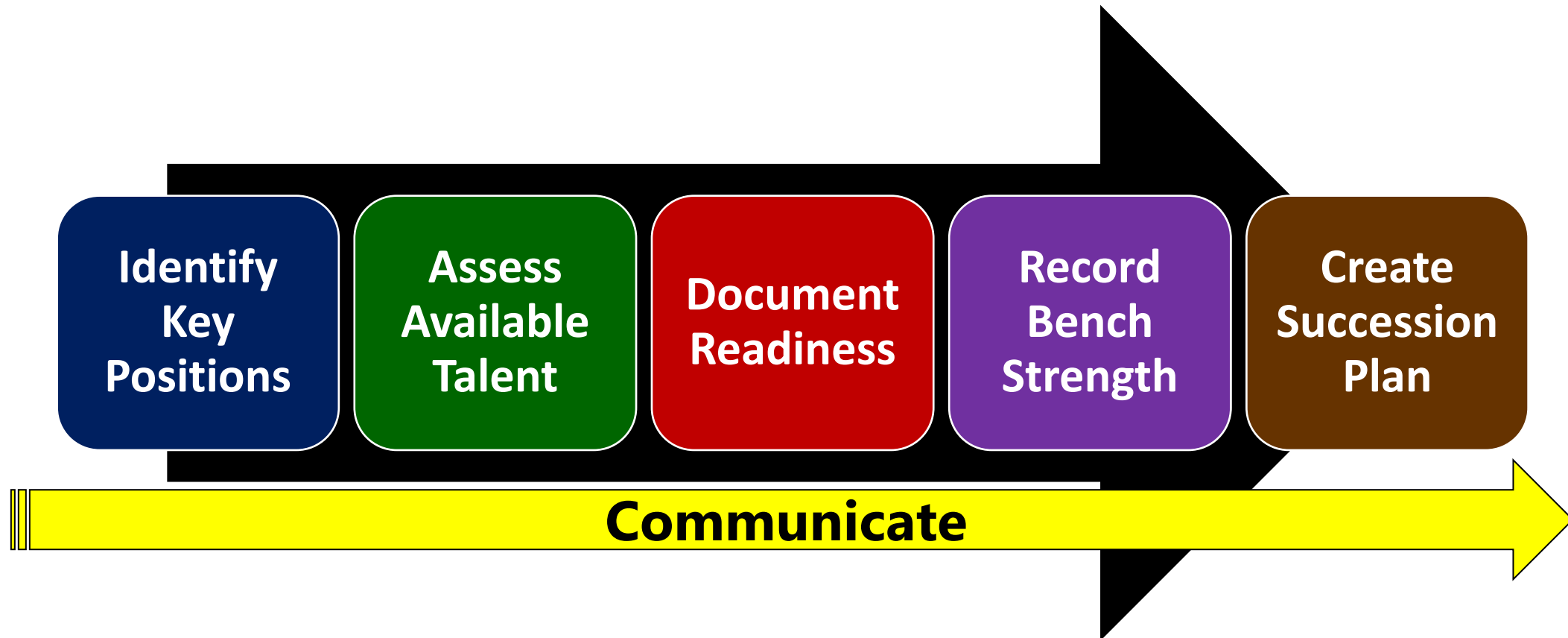


- Keys to Effective Succession Planning
- A Simplified Approach
 - Identify Key Positions
 - Assess Available Talent
 - Create a Readiness Chart
 - Document Bench Strength
 - Build, Hire, Borrow ... Release
- Succession Planning Communication
- Strategic Workforce Planning
- Timeline

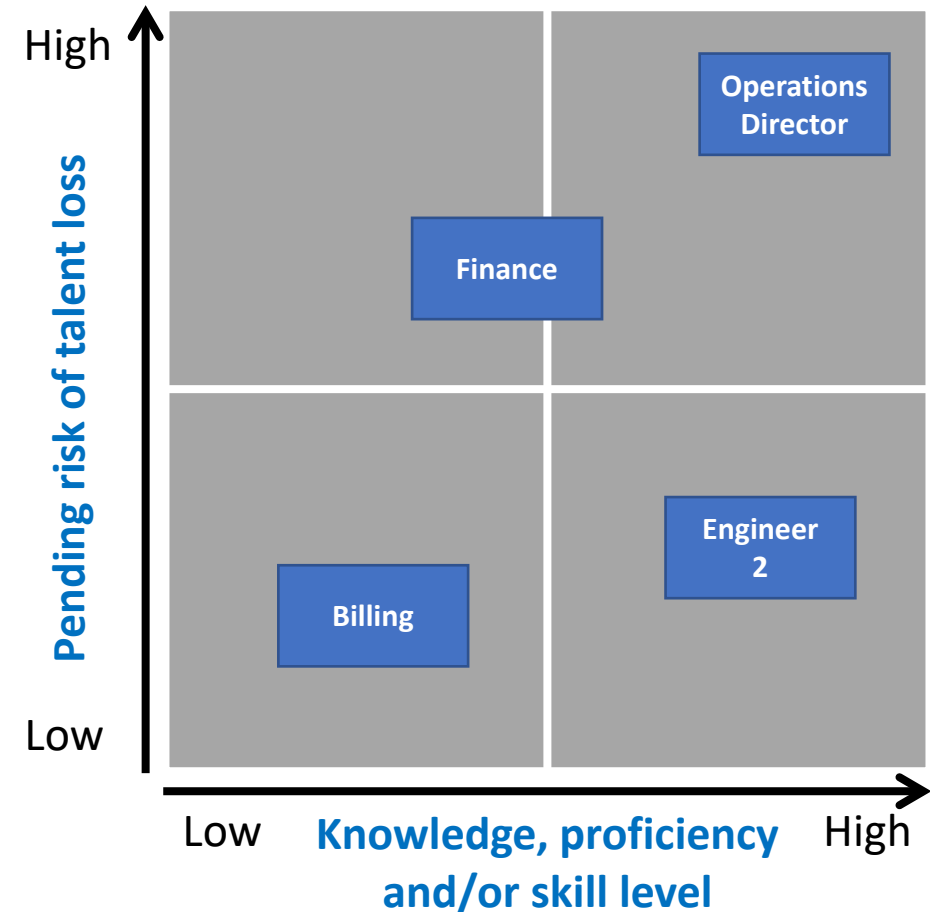
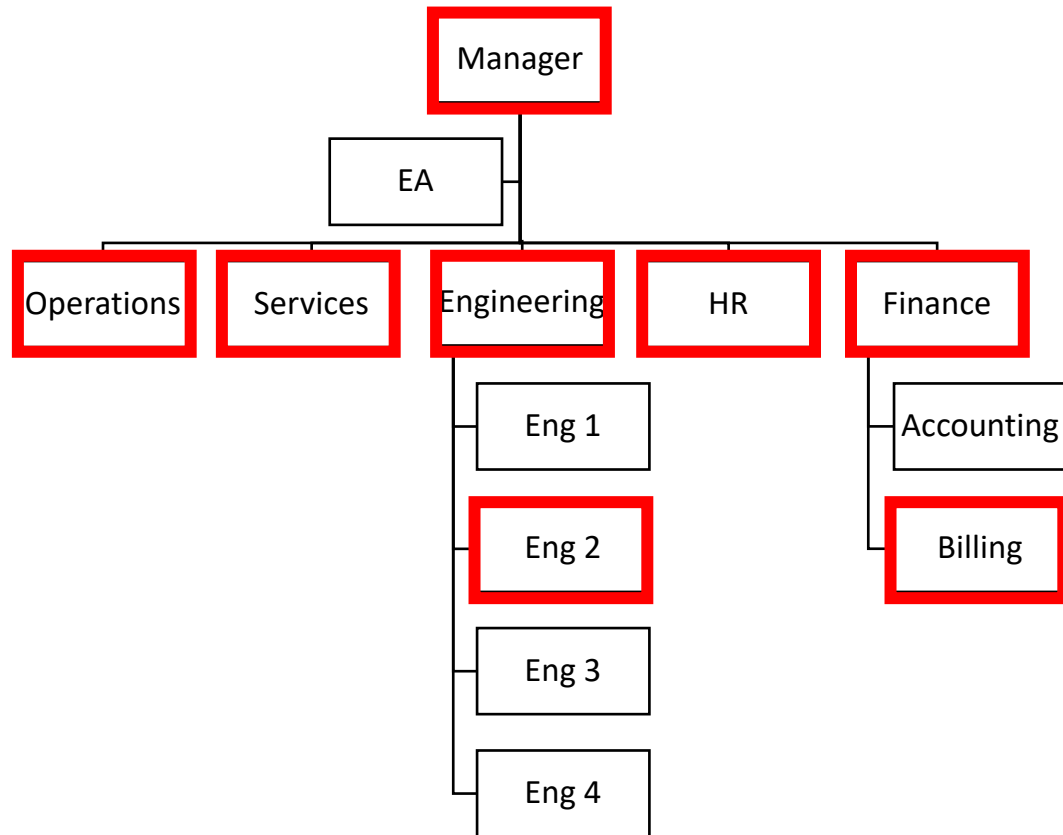
Keys to Effective Succession Planning

- Understand that “talent” is an enterprise risk.
- Obtain leadership engagement.
- Ensure managers drive the process instead of HR owning the development plans (HR should be a partner in this process)
- Assess ability and willingness to develop the talent pool.
- Keep the process alive through established meetings / processes.

5 Practical Steps + Communication



Identify Key Positions



Assess Available Talent

Key Position Title: Operations Director

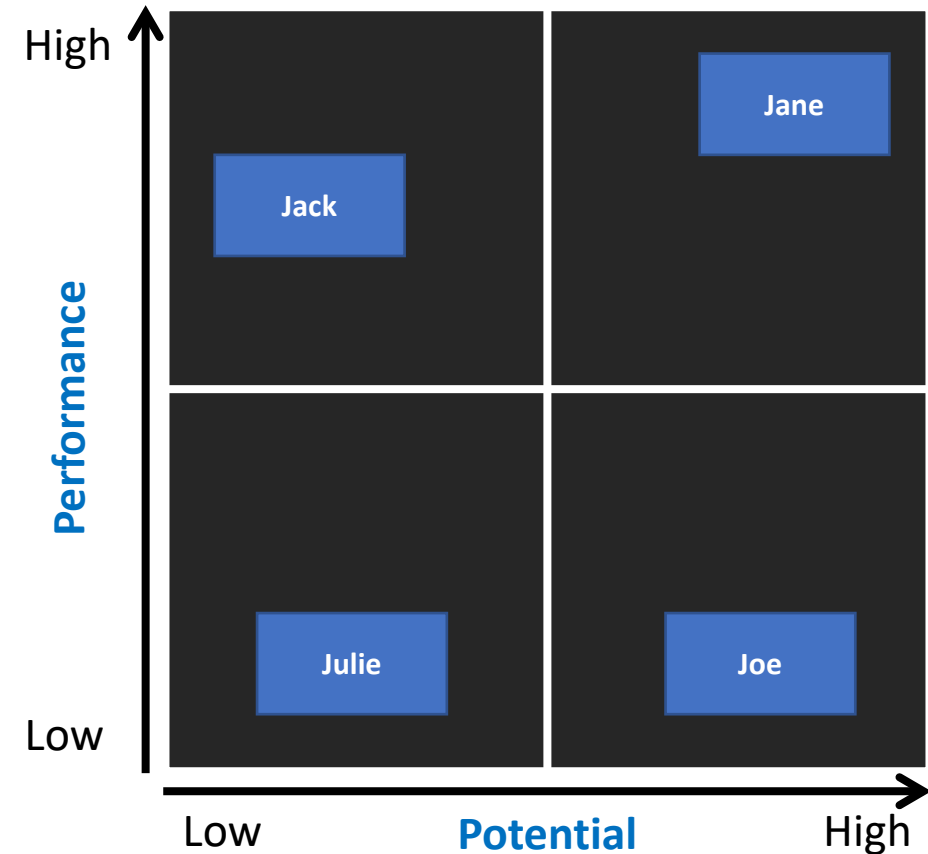
Position Vulnerability:

- Open in <1yr
- 1 – 3 years
- 3+ years

Incumbent Name:

Role: Directs the staff responsible for construction, operation and maintenance of distribution lines.

Candidate	Assessment
Julie	New to her current position, could not be ready in the next year
Joe	Has the potential to take on this role within the next year, but performance in current position has been low. Could be training, could be dis-engaged (career growth, ailing parent/spouse at home, etc)
Jack	High Performance, Low Potential – not interested in the position.
Jane	Performing well in her current role, has both the technical and management skills needed to assume the role.



Document Readiness

Key Position Title: Operations Director

Position Vulnerability: Open in <1yr

Incumbent Name:

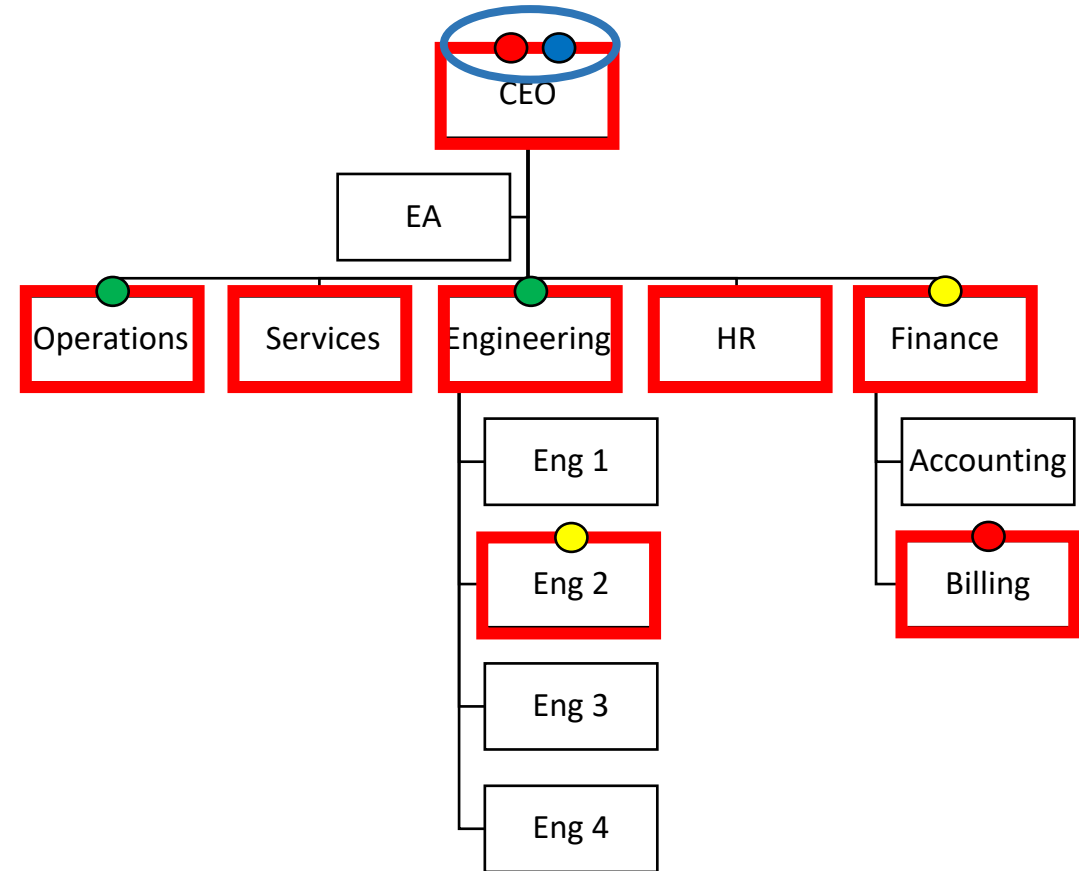
Role: Directs the staff responsible for construction, operation and maintenance of distribution lines.

Name	Strengths	Needs: Skills / Experience / Development	Timeframe
My Team			
Jane	<ul style="list-style-type: none">Strong problem-solving skillsHas worked closely with manager for past 2 yearsRespected by team	<ul style="list-style-type: none">Leading in crisis situationsMore exposure to budgeting/planningHas not been a manager in the past	4 mo.
Joe	<ul style="list-style-type: none">Strong problem-solving skillsHeld this role at another utility	<ul style="list-style-type: none">Build relationships with team membersDemonstrate commitment to co-op; willingness to work overtime	6 mo.
From Other Department			
Julie	<ul style="list-style-type: none">Strong problem-solving skillsRespected by teamHas been a manager in the past	<ul style="list-style-type: none">Understanding of our safety proceduresExperience with our processes and proceduresExposure to construction	2 yr.

Document Bench Strength

Bench Strength

- 0 Successors
- 1 Successor
- 2 or More Successors
- Strong Team



Create Succession Plan – Plan for Gaps

- Build:** Develop internal talent
- Hire:** Recruit new employees
Create Succession Plan – Plan for Gaps
- Borrow:** Contract contingent labor
- Release:** Underperforming or excess labor



Strategic Workforce Planning

Workforce planning is the systematic process for identifying and addressing the gaps between the workforce of today and the workforce needs of tomorrow.

Effective workforce planning enables us to:

- Align workforce requirements directly to the PUD's strategic and annual business plans.
- Develop a comprehensive picture of where gaps exist between competencies the workforce currently possesses and future competency requirements.
- Identify and implement gap reduction strategies.
- Make decisions about how best to structure the organization and deploy the workforce.

Thinking about the Future

Possible Future – What *could* happen

Plausible Future – What could *realistically* happen

Probable Future – What *is likely* to happen

Preferred Future – What *we want* to happen

Targeted Future

Succession Planning Communication

Balance transparency with discretion

Succession planning deals with sensitive issues.

Take time to assess who needs to know what

There will always be a degree of subjectivity and fluidity in our analysis of potential successors. Which types of information can and should be made public, shared internally or treated as highly confidential?

Share your formal process and key criteria for choosing successors

Being able to justify your reasons builds staff trust and engages your top performers in a clear development path to success.

Time Frame

Short Term – 1 Year

Identify, Assess, document
Commissioners Approval

Medium Term – 2 Years

Build, Hire, Borrow
Train and empower existing staff
Cross train departments
Commissioners Approval

Long Term – 3 + Years

Key staff is given opportunities to grow into their next roles.
Commissioners Approval

Common Succession Planning Mistakes



CAUTION

Don't make these mistakes

- Delegating succession planning to human resources rather than having line managers drive the process.
- Focusing only on senior management roles.
- Not consulting with potential successors.
- Not updating / discussing plans regularly.
- Relying exclusively on the incumbent's perspective.

